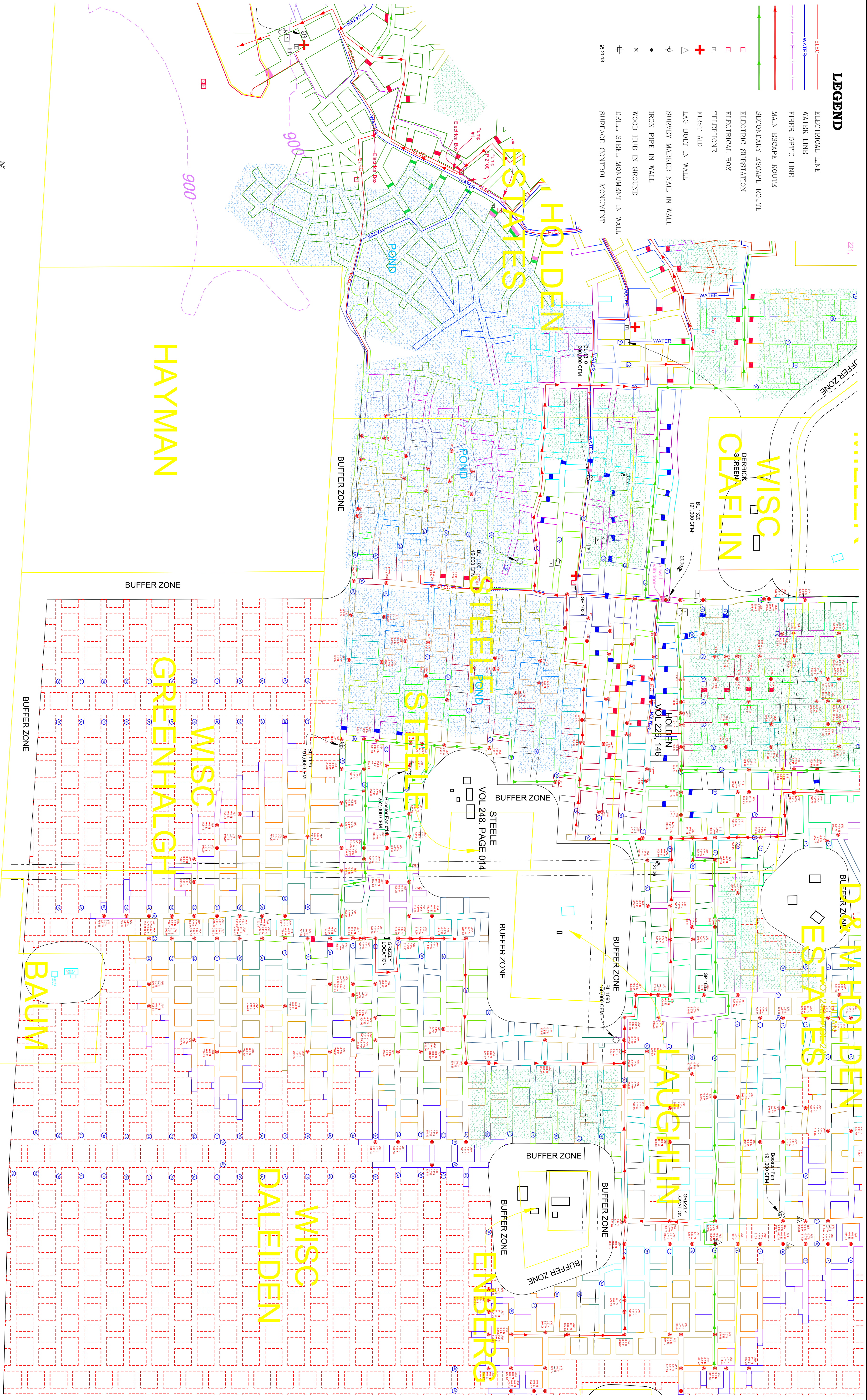


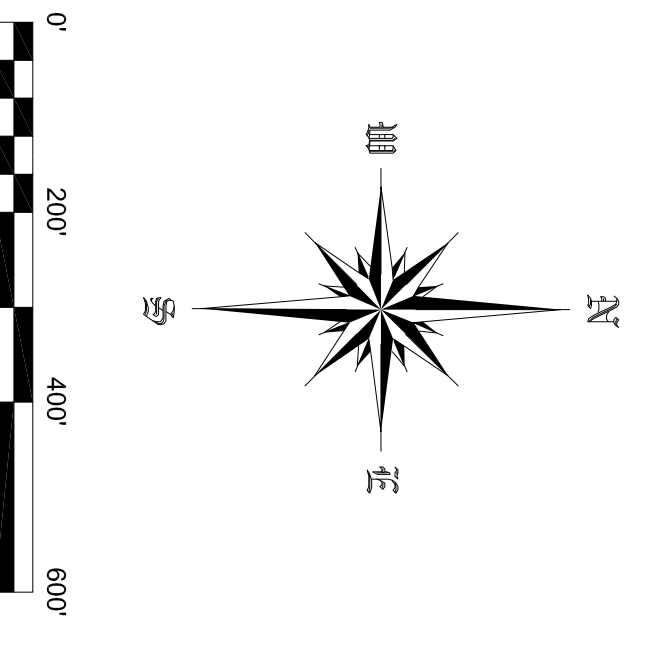
LEGEND

- ELECTRICAL LINE
- WATER LINE
- FIBER OPTIC LINE
- MAIN ESCAPE ROUTE
- SECONDARY ESCAPE ROUTE
- ELECTRICAL SUBSTATION
- ELECTRICAL BOX
- TELEPHONE
- + FIRST AID
- △ LAG BOLT IN WALL
- + SURVEY MARKER NAIL IN WALL
- + IRON PIPE IN WALL
- + WOOD HUB IN GROUND
- + DRILL STEEL MONUMENT IN WALL
- + SURFACE CONTROL MONUMENT
- + 2015



SURFACE CONTROL POINT COORDINATES REFERENCED TO PIERCE COUNTY COORDINATE SYSTEM

| PT. NO. | NORTHING | EASTING | ELEVATION |
|---------|------------|------------|-----------|
| 2002 | 265341.624 | 534183.658 | 1079.35 |
| 2005 | 265690.990 | 534603.626 | 1086.98 |
| 2010 | 266925.624 | 533975.772 | 1041.34 |
| 2011 | 267180.990 | 533532.559 | 1060.72 |
| 2012 | 266428.566 | 532577.032 | 936.76 |
| 2013 | 266461.456 | 531944.106 | 895.88 |
| 2014 | 267099.991 | 525134.181 | 687.51 |
| 2015 | 252944.147 | 530263.488 | 707.19 |



| POINT | ELEV |
|---------|--------|
| CP 760 | 796.38 |
| CP 761 | 794.13 |
| CP 762 | 792.92 |
| CP 763 | 788.66 |
| CP 764 | 791.96 |
| CP 765 | 793.29 |
| CP 766 | 797.34 |
| CP 767 | 812.16 |
| CP 768 | 811.51 |
| CP 770 | 811.28 |
| CP 771 | 791.17 |
| CP 772 | 791.78 |
| CP 773 | 796.22 |
| CP 774 | 797.70 |
| CP 775 | 800.96 |
| CP 776 | 809.77 |
| CP 777 | 805.39 |
| CP 778 | 804.38 |
| CP 779 | 814.39 |
| CP 780 | 814.75 |
| CP 781 | 813.60 |
| CP 782 | 813.27 |
| CP 783 | 812.35 |
| CP 784 | 814.28 |
| CP 785 | 812.09 |
| CP 786 | 788.15 |
| CP 787 | 790.87 |
| CP 788 | 792.75 |
| CP 789 | 794.38 |
| CP 790 | 797.34 |
| CP 791 | 814.99 |
| CP 792 | 815.83 |
| CP 793 | 815.74 |
| CP 794 | 805.51 |
| CP 795 | 800.17 |
| CP 796 | 800.02 |
| CP 797 | 808.33 |
| CP 798 | 801.89 |
| CP 799 | 805.18 |
| CP 800 | 802.29 |
| CP 801 | 796.19 |
| CP 802 | 795.39 |
| CP 803 | 798.10 |
| CP 804 | 797.63 |
| CP 805 | 798.77 |
| CP 806 | 800.10 |
| CP 807 | 806.16 |
| CP 808 | 802.73 |
| CP 809 | 804.89 |
| CP 810 | 816.01 |
| CP 811 | 809.12 |
| CP 812 | 806.67 |
| CP 813 | 805.79 |
| CP 814 | 805.54 |
| CP 815 | 804.83 |
| CP 816 | 813.59 |
| CP 817 | 803.97 |
| CP 818 | 802.62 |
| CP 819 | 798.86 |
| CP 820 | 793.88 |
| CP 821 | 801.58 |
| CP 822 | 793.35 |
| CP 823 | 805.42 |
| CP 824 | 792.77 |
| CP 825 | 794.95 |
| CP 826 | 796.24 |
| CP 827 | 814.25 |
| CP 828 | 802.38 |
| CP 829 | 802.03 |
| CP 830 | 799.56 |
| CP 831 | 801.99 |
| CP 832 | 804.11 |
| CP 833 | 809.15 |
| CP 834 | 796.55 |
| CP 835 | 796.98 |
| CP 836 | 805.33 |
| CP 837 | 812.03 |
| CP 838 | 812.15 |
| CP 839 | 812.10 |
| CP 840 | 811.51 |
| CP 841 | 812.10 |
| CP 842 | 814.01 |
| CP 843 | 806.48 |
| CP 844 | 805.83 |
| CP 845 | 809.32 |
| CP 846 | 807.24 |
| CP 847 | 809.77 |
| CP 848 | 810.66 |
| CP 849 | 811.65 |
| CP 850 | 812.28 |
| CP 851 | 811.74 |
| CP 852 | 811.40 |
| CP 853 | 813.69 |
| CP 855 | 809.59 |
| CP 856 | 805.65 |
| CP 857 | 804.30 |
| CP 858 | 803.15 |
| TP 859 | 814.23 |
| FR8 3/8 | 812.13 |
| CP 862 | 810.74 |
| CP 863 | 812.31 |
| CP 864 | 801.64 |

| NO. | DATE | REVISIONS | BY |
|-----|-----------|----------------------------------|-----|
| 2 | 3/16/2017 | AIR WALLS | TMH |
| 1 | 3/13/2017 | AIRFLOW, ESCAPES, REMOVE GRIZZLY | TMH |

WISCONSIN INDUSTRIAL SAND COMPANY, LLC
 A DIVISION OF FAIRMOUNTSANTROL
 MAIDEN ROCK, WISCONSIN
 CONTROL POINT LOCATION MAP

HEALY LAND SURVEYING
 Healy Land Surveying
 P.O. Box 221
 Niagara, WI 54151
 Phone: 715-548-0566
 info@healysurveying.com

PROJECT NO. 17-0491
 CAD FILE 17-0491J
 SURVEYED BY TMH
 DRAWN BY TMH
 APPROVED BY
 DATE 3/8/2017
 CRD FILE 17-0491
 SURVEY DATE 3/2/2017
 CHECKED BY TMH
 SCALE 1"=200'

E-2
 SHEET NO.