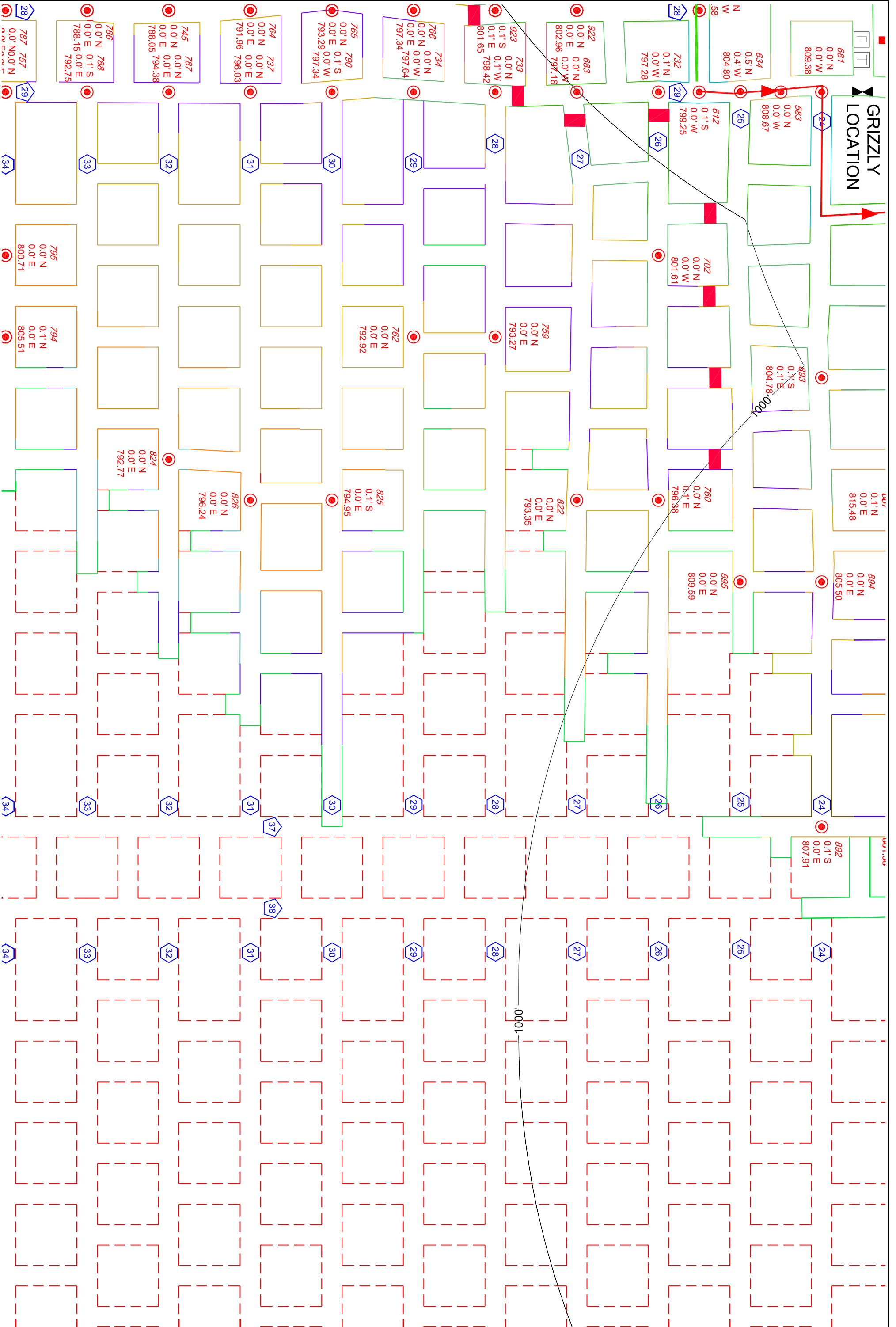


GRIZZLY LOCATION



J-6H
SHEET NO.

PROJECT NO. 17-0512	CAD FILE 17-0512	SURVEYED BY TMH	DRAWN BY TMH	APPROVED BY	NO.	DATE	REVISIONS	BY
DATE 6/30/2017	CRD FILE 17-0512	SURVEY DATE 6/28/2017	CHECKED BY TMH	SCALE 1"=100'				

WISCONSIN INDUSTRIAL SAND COMPANY, LLC
A DIVISION OF FAIRMOUNTSANTROL
MAIDEN ROCK, WISCONSIN
CONTROL POINT DETAIL MAP

Healy Land Surveying
P.O. Box 221
Niagara, WI 54151
Phone: 715-548-0566
Info@healysurveying.com