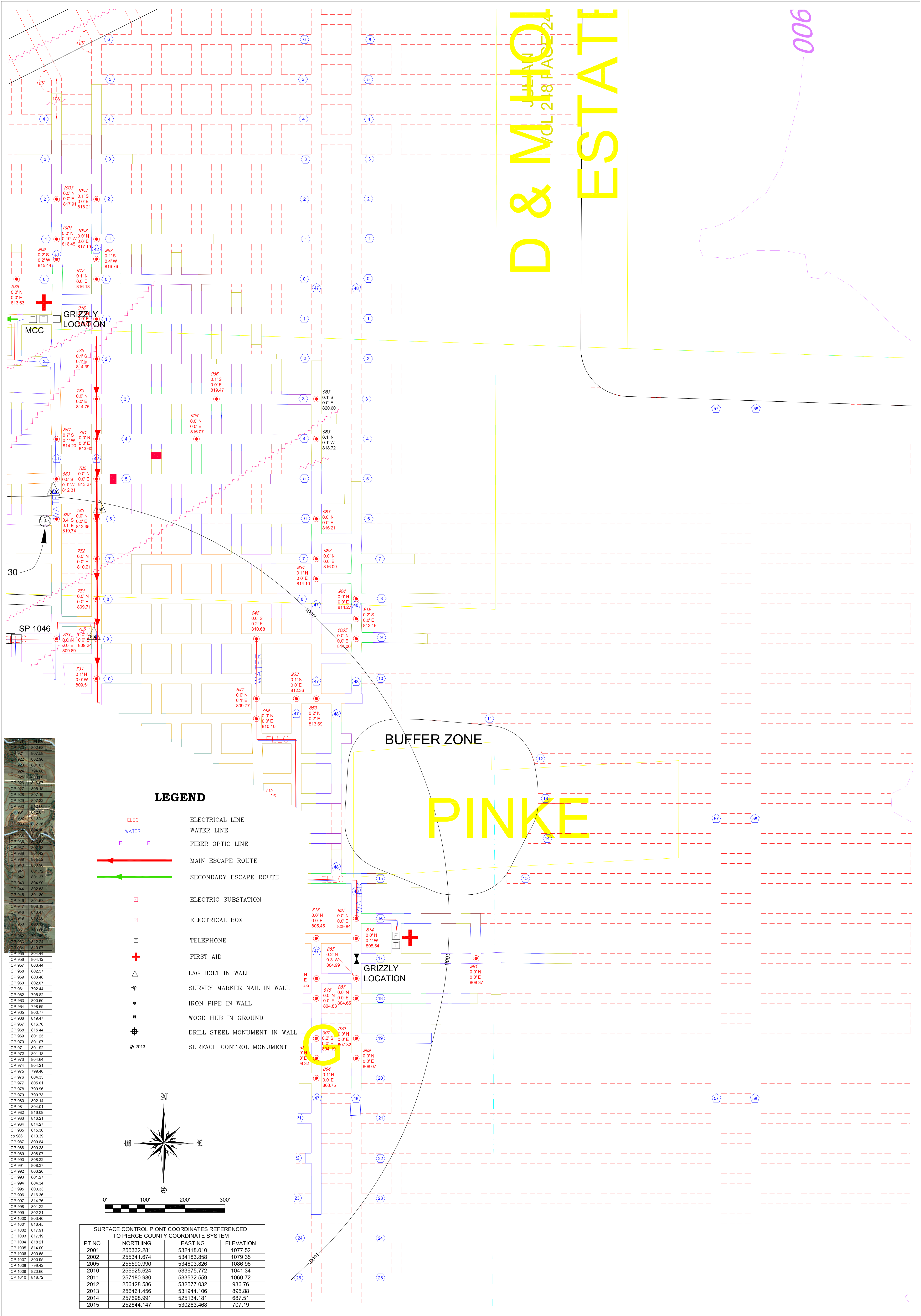


D & M HOLDINGS ESTATE

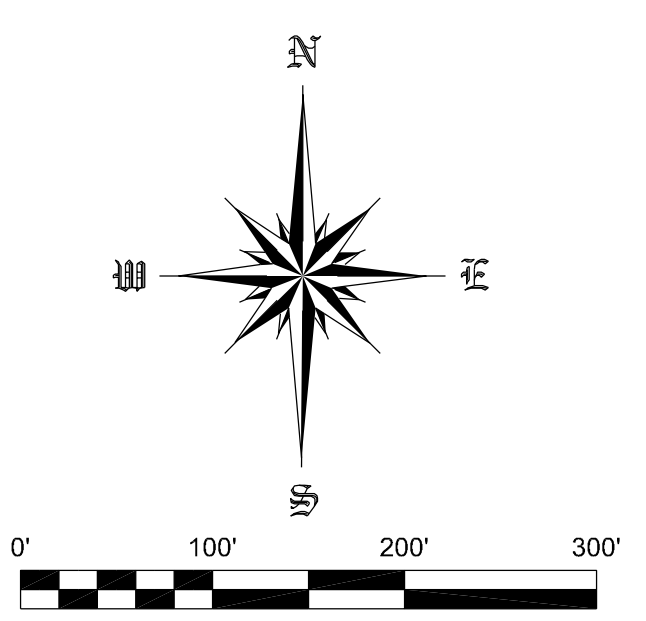
006



CP 901	816.68
CP 902	802.68
CP 903	807.58
CP 904	802.86
CP 905	801.65
CP 906	794.00
CP 907	800.00
CP 908	816.27
CP 909	805.16
CP 910	807.19
CP 911	807.52
CP 912	812.16
CP 913	813.26
CP 914	814.30
CP 915	814.30
CP 916	814.30
CP 917	814.30
CP 918	814.30
CP 919	814.30
CP 920	814.30
CP 921	814.30
CP 922	814.30
CP 923	814.30
CP 924	814.30
CP 925	814.30
CP 926	814.30
CP 927	814.30
CP 928	814.30
CP 929	814.30
CP 930	814.30
CP 931	814.30
CP 932	814.30
CP 933	814.30
CP 934	814.30
CP 935	814.30
CP 936	814.30
CP 937	814.30
CP 938	814.30
CP 939	814.30
CP 940	814.30
CP 941	814.30
CP 942	814.30
CP 943	814.30
CP 944	814.30
CP 945	814.30
CP 946	814.30
CP 947	814.30
CP 948	814.30
CP 949	814.30
CP 950	814.30
CP 951	814.30
CP 952	814.30
CP 953	814.30
CP 954	814.30
CP 955	814.30
CP 956	814.30
CP 957	814.30
CP 958	814.30
CP 959	814.30
CP 960	814.30
CP 961	814.30
CP 962	814.30
CP 963	814.30
CP 964	814.30
CP 965	814.30
CP 966	814.30
CP 967	814.30
CP 968	814.30
CP 969	814.30
CP 970	814.30
CP 971	814.30
CP 972	814.30
CP 973	814.30
CP 974	814.30
CP 975	814.30
CP 976	814.30
CP 977	814.30
CP 978	814.30
CP 979	814.30
CP 980	814.30
CP 981	814.30
CP 982	814.30
CP 983	814.30
CP 984	814.30
CP 985	814.30
CP 986	814.30
CP 987	814.30
CP 988	814.30
CP 989	814.30
CP 990	814.30
CP 991	814.30
CP 992	814.30
CP 993	814.30
CP 994	814.30
CP 995	814.30
CP 996	814.30
CP 997	814.30
CP 998	814.30
CP 999	814.30
CP 1000	814.30
CP 1001	814.30
CP 1002	814.30
CP 1003	814.30
CP 1004	814.30
CP 1005	814.00
CP 1006	800.65
CP 1007	800.95
CP 1008	799.42
CP 1009	820.60
CP 1010	818.72

LEGEND

- ELEC — ELECTRICAL LINE
- WATER — WATER LINE
- F — FIBER OPTIC LINE
- — MAIN ESCAPE ROUTE
- — SECONDARY ESCAPE ROUTE
- ELECTRIC SUBSTATION
- ELECTRICAL BOX
- + — FIRST AID
- △ — LAG BOLT IN WALL
- ⊕ — SURVEY MARKER NAIL IN WALL
- — IRON PIPE IN WALL
- ⊗ — WOOD HUB IN GROUND
- ⊕ — DRILL STEEL MONUMENT IN WALL
- ⬇ 2013 — SURFACE CONTROL MONUMENT



SURFACE CONTROL POINT COORDINATES REFERENCED TO PIERCE COUNTY COORDINATE SYSTEM

PT NO.	NORTHING	EASTING	ELEVATION
2001	255332.281	532418.010	1077.52
2002	255341.674	534183.858	1079.35
2005	255590.990	534603.826	1086.98
2010	256925.624	533675.772	1041.34
2011	257180.980	533532.659	1060.72
2012	256426.586	532577.032	936.76
2013	256461.456	531944.106	895.88
2014	257698.991	525134.181	687.51
2015	252844.147	530263.468	707.19

SHEET NO. F-4

PROJECT NO.	CAD FILE	SURVEYED BY	DRAWN BY	APPROVED BY	NO.	DATE	REVISIONS	BY
18-0567	18-0567.dwg	TMH	TMH					
DATE	CRD FILE	SURVEY DATE	CHECKED BY	SCALE				
3/29/2018	18-0567.crd	3/29/2018	TMH	1"=100'				

WISCONSIN INDUSTRIAL SAND COMPANY, LLC
A DIVISION OF FAIRMOUNTSANTROL
MAIDEN ROCK, WISCONSIN
CONTROL POINT LOCATION MAP

Healy Land Surveying
P.O. Box 221
Niagara, WI 54151
Phone: 715-548-0566
info@healysurveying.com