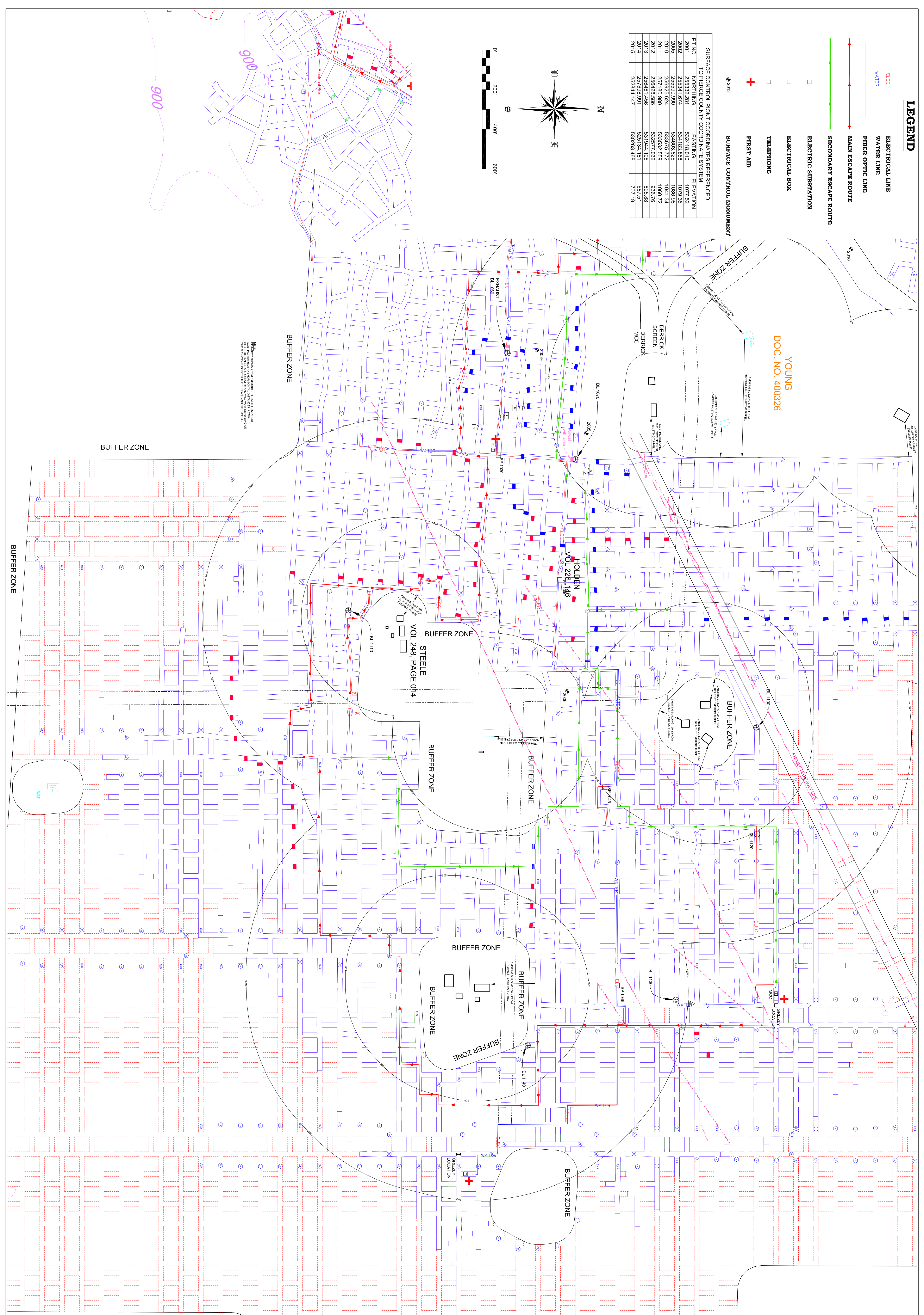
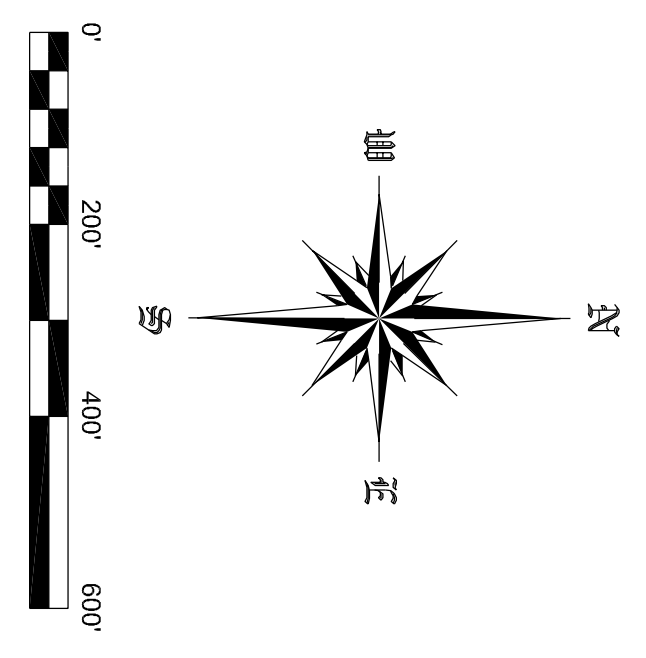


**LEGEND**

- ELECTRICAL LINE
- WATER LINE
- FIBER OPTIC LINE
- MAIN ESCAPE ROUTE
- SECONDARY ESCAPE ROUTE
- ELECTRICAL SUBSTATION
- ELECTRICAL BOX
- TELEPHONE
- FIRST AID
- SURFACE CONTROL MONUMENT

SURFACE CONTROL POINT COORDINATES REFERENCED TO PIERCE COUNTY COORDINATE SYSTEM

PT. NO.	NORTHING	EASTING	ELEVATION
2001	256332.281	532418.010	1077.52
2002	256341.674	534183.858	1079.56
2005	256690.980	534603.826	1086.98
2010	256925.624	533875.772	1041.34
2011	257180.980	533532.559	1060.72
2012	256428.586	532577.032	936.76
2013	256461.466	531944.106	895.88
2014	257698.981	525134.181	687.51
2015	262844.147	530263.488	707.19



YOUNG  
DOC. NO. 400326

NOTE:  
THIS PLAN SHOWS THE GENERAL LAYOUT OF THE FACILITY AND IS NOT TO BE USED FOR CONSTRUCTION WITHOUT THE APPROVAL OF THE ENGINEER. THE EXACT LOCATION OF THE FACILITY SHALL BE DETERMINED BY THE FIELD SURVEYOR.

A-2  
SHEET NO.

PROJECT NO.		CAD FILE		SURVEYED BY		DRAWN BY		APPROVED BY		NO.		DATE		REVISIONS		BY	
18-0579		18-0579.dwg		TMH		TMH				1		10/12/2017		ESCAPE ROUTE		TMH	
DATE		CRD FILE		SURVEY DATE		CHECKED BY		SCALE									
7/2/2018		18-0579.crd		6/27/2018		TMH		1"=200'									

WISCONSIN INDUSTRIAL SAND COMPANY, LLC  
A DIVISION OF COVIA HOLDINGS CORP.  
MAIDEN ROCK, WISCONSIN  
OWNERSHIP MAP

Healy Land Surveying  
P.O. Box 221  
Niagara, WI 54151  
Phone: 715-548-0566  
info@healysurveying.com