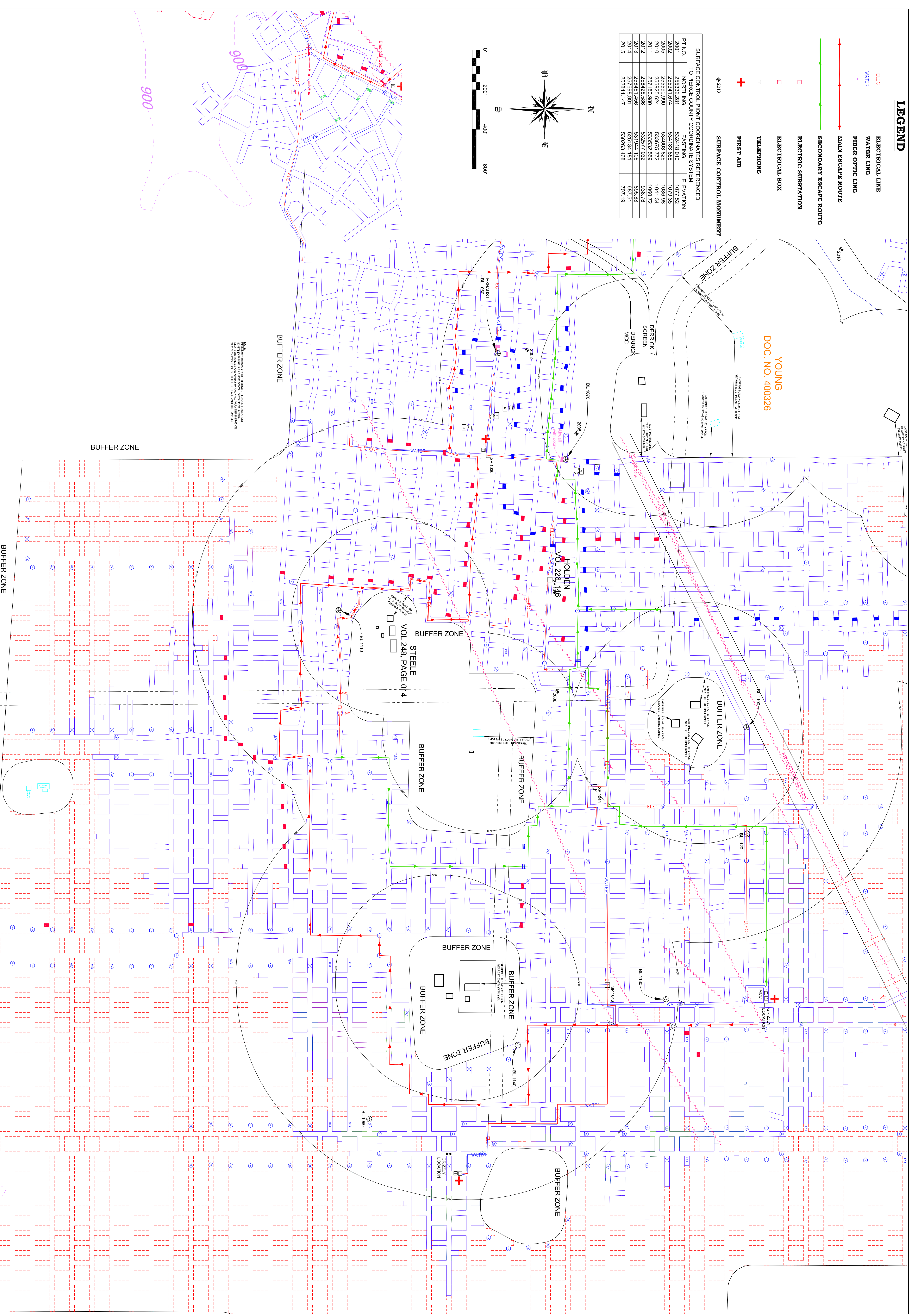
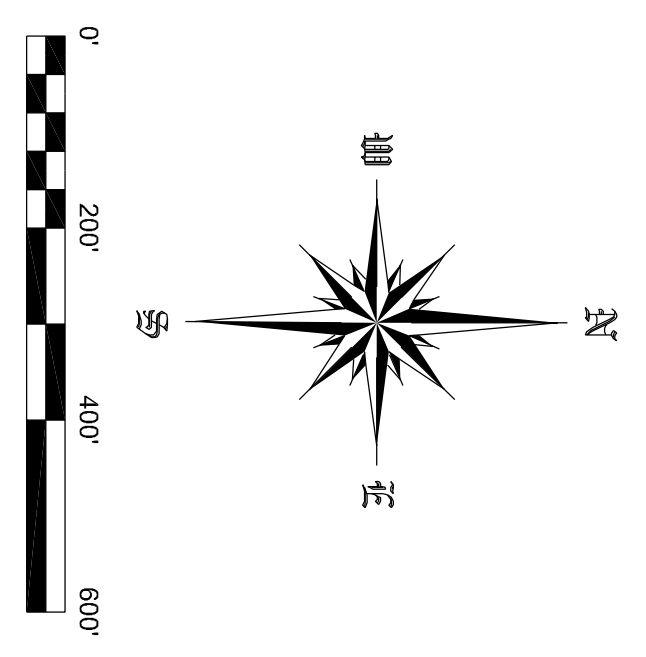


LEGEND

- ELECTRICAL LINE
- WATER LINE
- FIBER OPTIC LINE
- MAIN ESCAPE ROUTE
- SECONDARY ESCAPE ROUTE
- ELECTRICAL SUBSTATION
- ELECTRICAL BOX
- TELEPHONE
- FIRST AID
- SURFACE CONTROL MONUMENT

SURFACE CONTROL POINT COORDINATES REFERENCED TO PIERCE COUNTY COORDINATE SYSTEM

PT. NO.	NORTHING	EASTING	ELEVATION
2001	255332.291	532418.070	1077.52
2002	255341.054	531433.558	1078.58
2003	255349.817	530449.046	1081.34
2010	2557180.980	533876.772	1041.34
2011	2557180.980	533552.559	1060.72
2012	256424.586	532577.032	936.76
2013	256461.456	531944.106	885.98
2014	257693.991	525134.181	687.51
2015	252844.147	532053.488	707.19



NOTES:
 1. THE SURFACE CONTROL POINT COORDINATES REFERENCED TO PIERCE COUNTY COORDINATE SYSTEM ARE LISTED IN THE ADJACENT TABLE.
 2. THE SURFACE CONTROL POINT COORDINATES REFERENCED TO PIERCE COUNTY COORDINATE SYSTEM ARE LISTED IN THE ADJACENT TABLE.

YOUNG
 DOC. NO. 400326

PROJECT NO.	CAD FILE	SURVEYED BY	DRAWN BY	APPROVED BY	NO.	DATE	REVISIONS	BY
18-0593	18-0593.dwg	TMH	TMH		1	10/12/2017	ESCAPE ROUTE	TMH
DATE	CRD FILE	SURVEY DATE	CHECKED BY	SCALE				
8/7/2018	18-0593.crd	8/2/2018	TMH	1"=200'				

WISCONSIN INDUSTRIAL SAND COMPANY, LLC
 A DIVISION OF COVIA HOLDINGS CORP.
 MAIDEN ROCK, WISCONSIN
 OWNERSHIP MAP

Healy Land Surveying
 P.O. Box 221
 Niagara, WI 54151
 Phone: 715-548-0566
 Info: @healysurveying.com

A-2
 SHEET NO.