

SURFACE CONTROL POINT COORDINATES REFERENCED TO PIERCE COUNTY COORDINATE SYSTEM

PT NO.	NORTHING	EASTING	ELEVATION
2001	255332.281	532418.010	1077.52
2002	255341.674	534183.858	1079.35
2005	255590.990	534603.826	1086.98
2010	256925.624	533675.772	1041.34
2011	257180.980	533523.559	1060.72
2012	256426.586	532577.032	936.76
2013	256461.456	531944.106	895.88
2014	257698.991	525134.181	687.51
2015	252844.147	530263.468	707.19

LEGEND

POINT	ELEV
CP 1025	821.32
CP 1026	820.84
CP 1027	818.99
CP 1028	821.03
CP 1029	805.25
CP 1030	804.68
CP 1031	805.00
CP 1032	806.31
CP 1033	807.16
CP 1034	820.89
CP 1035	801.27
CP 1036	797.70
CP 1037	799.95
CP 1038	800.82
CP 1039	799.85
CP 1040	799.83
CP 1041	799.95
CP 1042	802.43
CP 1043	801.07
CP 1044	800.72
CP 1045	801.03
CP 1046	820.13
CP 1047	818.85
CP 1048	820.93
CP 1049	803.92
CP 1050	804.71
CP 1051	806.57
CP 1052	801.79
CP 1053	803.24
CP 1054	803.31
CP 1055	806.50
CP 1056	810.80
CP 1057	809.52
CP 1058	810.78
CP 1059	810.45
CP 1060	810.06
CP 1061	810.89
CP 1062	809.57
CP 1063	809.67
CP 1064	811.52
CP 1065	808.13
CP 1066	808.72
CP 1067	810.17
CP 1068	822.16
CP 1069	819.87
TCF	820.28
CP 1071	821.08
CP 1072	807.89
CP 1073	808.96
CP 1074	811.80
CP 1075	814.01
CP 1076	816.65
CP 1077	815.53
CP 1078	820.21
CP 1079	817.25
CP 1080	816.06
CP 1081	807.38
CP 1082	805.32
CP 1083	805.07
CP 1084	807.38
CP 1085	806.47
CP 1086	823.23
CP 1087	822.88
CP 1088	822.82
CP 1089	821.96
CP 1090	822.94
CP 1091	820.55
CP 1092	820.86
CP 1093	819.07

- ELEC — ELECTRICAL LINE
- WATER — WATER LINE
- F — FIBER OPTIC LINE
- — MAIN ESCAPE ROUTE
- — SECONDARY ESCAPE ROUTE
- ELECTRIC SUBSTATION
- ELECTRICAL BOX
- TELEPHONE
- + — FIRST AID
- △ — LAG BOLT IN WALL
- ⊕ — SURVEY MARKER NAIL IN WALL
- — IRON PIPE IN WALL
- ⊗ — WOOD HUB IN GROUND
- ⊕ — DRILL STEEL MONUMENT IN WALL
- ⊕ — SURFACE CONTROL MONUMENT

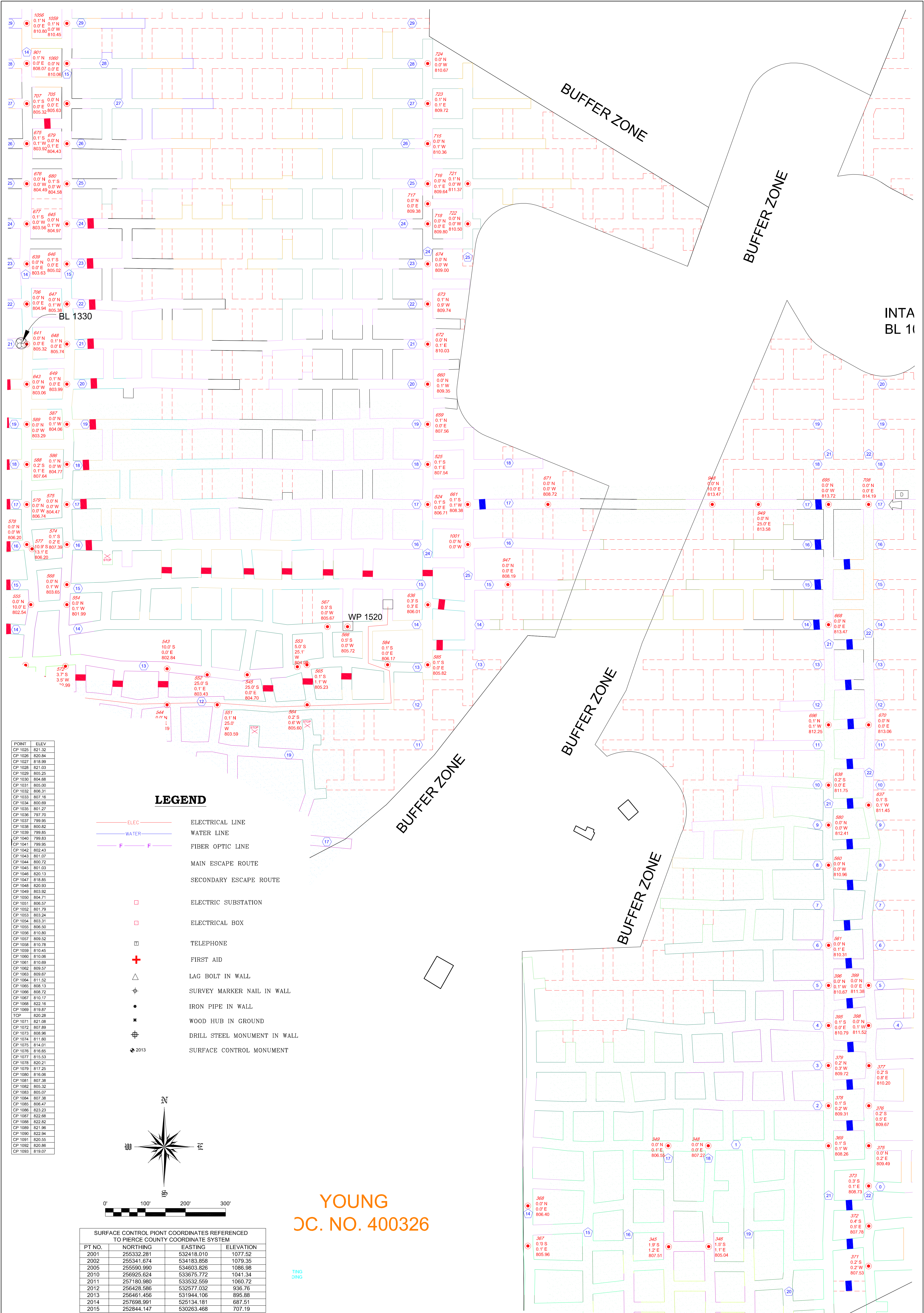
SHEET NO. E-1

PROJECT NO.	CAD FILE	SURVEYED BY	DRAWN BY	APPROVED BY	NO.	DATE	REVISIONS	BY
19-0628	19-0628.dwg	TMH	TMH					
DATE	CRD FILE	SURVEY DATE	CHECKED BY	SCALE				
3/3/2019	19-0628.crd	3/1/2019	TMH	1"=100'				

WISCONSIN INDUSTRIAL SAND COMPANY, LLC
 A DIVISION OF COVIA HOLDINGS CORP.
 MAIDEN ROCK, WISCONSIN
 CONTROL POINT LOCATION MAP

HEALY
 LAND SURVEYING

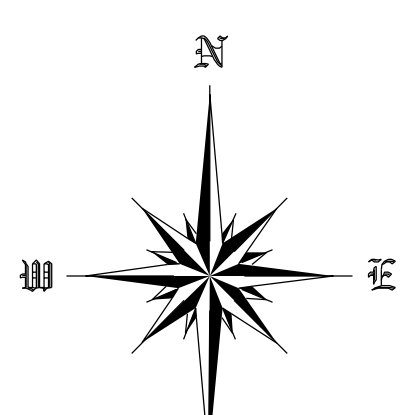
Healy Land Surveying
 P.O. Box 221
 Niagara, WI 54151
 Phone: 715-548-0566
 info@healysurveying.com



POINT	ELEV
CP 1025	821.32
CP 1026	820.84
CP 1027	818.99
CP 1028	821.03
CP 1029	805.25
CP 1030	804.68
CP 1031	805.00
CP 1032	806.31
CP 1033	807.16
CP 1034	800.69
CP 1035	801.27
CP 1036	797.70
CP 1037	798.95
CP 1038	800.82
CP 1039	799.85
CP 1040	799.83
CP 1041	799.95
CP 1042	802.43
CP 1043	801.07
CP 1044	800.72
CP 1045	801.03
CP 1046	820.13
CP 1047	818.85
CP 1048	820.93
CP 1049	803.92
CP 1050	804.71
CP 1051	806.57
CP 1052	801.79
CP 1053	803.24
CP 1054	803.31
CP 1055	806.50
CP 1056	810.80
CP 1057	809.52
CP 1058	810.78
CP 1059	810.45
CP 1060	810.06
CP 1061	810.69
CP 1062	809.57
CP 1063	809.67
CP 1064	811.52
CP 1065	808.13
CP 1066	808.72
CP 1067	810.17
CP 1068	822.16
CP 1069	819.67
TCP	820.28
CP 1071	821.08
CP 1072	807.89
CP 1073	808.96
CP 1074	811.60
CP 1075	814.01
CP 1076	816.65
CP 1077	815.53
CP 1078	820.21
CP 1079	817.25
CP 1080	816.06
CP 1081	807.38
CP 1082	805.32
CP 1083	805.07
CP 1084	807.38
CP 1085	806.47
CP 1086	823.23
CP 1087	822.68
CP 1088	822.82
CP 1089	821.96
CP 1090	822.94
CP 1091	820.55
CP 1092	820.86
CP 1093	819.07

LEGEND

- ELEC ELECTRICAL LINE
- WATER WATER LINE
- F FIBER OPTIC LINE
- MAIN ESCAPE ROUTE
- SECONDARY ESCAPE ROUTE
- ELECTRIC SUBSTATION
- ELECTRICAL BOX
- ☎ TELEPHONE
- ⊕ FIRST AID
- △ LAG BOLT IN WALL
- ⊕ SURVEY MARKER NAIL IN WALL
- IRON PIPE IN WALL
- ⊕ WOOD HUB IN GROUND
- ⊕ DRILL STEEL MONUMENT IN WALL
- ⊕ 2013 SURFACE CONTROL MONUMENT



YOUNG JC. NO. 400326

SURFACE CONTROL POINT COORDINATES REFERENCED TO PIERCE COUNTY COORDINATE SYSTEM			
PT NO.	NORTHING	EASTING	ELEVATION
2001	255332.281	532418.010	1077.52
2002	255341.674	534183.858	1079.35
2005	255590.990	534603.826	1086.98
2010	256925.624	533675.772	1041.34
2011	257180.980	533532.659	1060.72
2012	256428.586	532577.032	936.76
2013	256461.456	531944.106	895.88
2014	257698.991	525134.181	687.51
2015	252844.147	530263.468	707.19

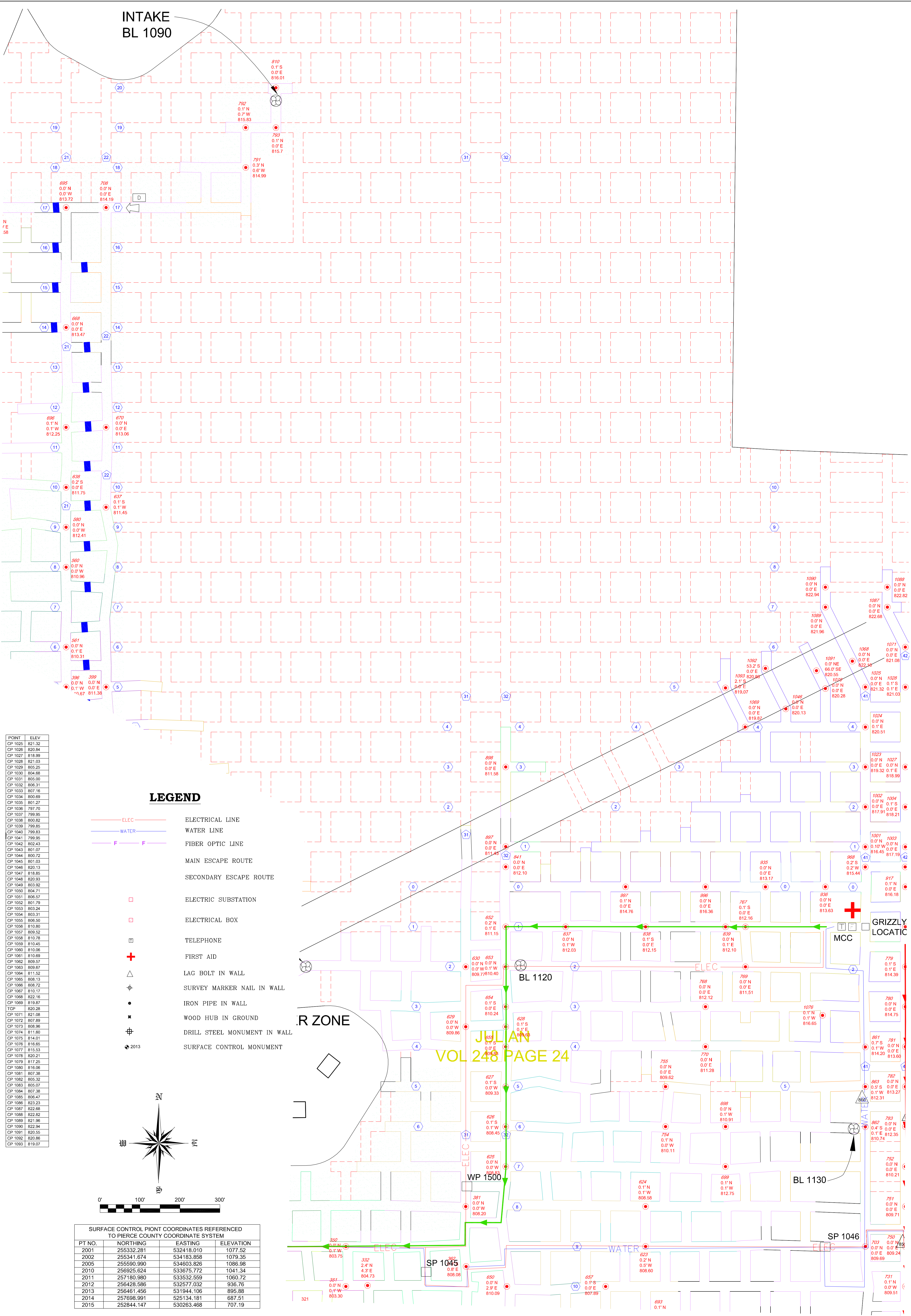
SHEET NO. **F-2**

PROJECT NO.	CAD FILE	SURVEYED BY	DRAWN BY	APPROVED BY	NO.	DATE	REVISIONS	BY
19-0628	19-0628.dwg	TMH	TMH					
DATE	CRD FILE	SURVEY DATE	CHECKED BY	SCALE				
3/3/2019	19-0628.crd	3/1/2019	TMH	1"=100'				

WISCONSIN INDUSTRIAL SAND COMPANY, LLC
 A DIVISION OF COVIA HOLDINGS CORP.
 MAIDEN ROCK, WISCONSIN
 CONTROL POINT LOCATION MAP

HEALY LAND SURVEYING
 Healy Land Surveying
 P.O. Box 221
 Niagara, WI 54151
 Phone: 715-548-0566
 info@healysurveying.com

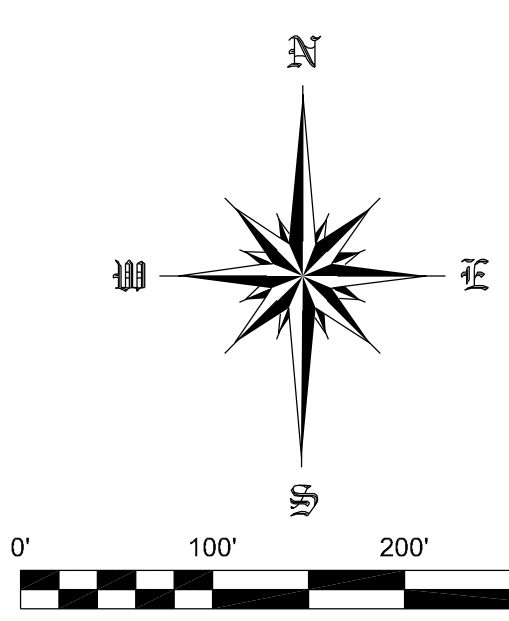
INTAKE
BL 1090



POINT	ELEV
CP 1025	821.32
CP 1026	820.84
CP 1027	818.99
CP 1028	821.03
CP 1029	805.25
CP 1030	804.68
CP 1031	805.00
CP 1032	806.31
CP 1033	807.16
CP 1034	800.89
CP 1035	801.27
CP 1036	797.70
CP 1037	799.95
CP 1038	800.82
CP 1039	799.85
CP 1040	799.83
CP 1041	799.95
CP 1042	802.43
CP 1043	801.07
CP 1044	800.72
CP 1045	801.03
CP 1046	820.13
CP 1047	818.85
CP 1048	820.93
CP 1049	803.92
CP 1050	804.71
CP 1051	806.57
CP 1052	801.79
CP 1053	803.24
CP 1054	803.31
CP 1055	806.50
CP 1056	810.80
CP 1057	809.52
CP 1058	810.78
CP 1059	810.45
CP 1060	810.08
CP 1061	810.69
CP 1062	809.57
CP 1063	809.67
CP 1064	811.52
CP 1065	808.13
CP 1066	808.72
CP 1067	810.17
CP 1068	822.16
CP 1069	819.87
TOP	820.28
CP 1071	821.08
CP 1072	807.89
CP 1073	808.96
CP 1074	811.80
CP 1075	814.01
CP 1076	816.85
CP 1077	815.53
CP 1078	820.21
CP 1079	817.25
CP 1080	816.06
CP 1081	807.38
CP 1082	805.32
CP 1083	805.07
CP 1084	807.38
CP 1085	806.47
CP 1086	823.23
CP 1087	822.88
CP 1088	822.82
CP 1089	821.96
CP 1090	822.94
CP 1091	820.55
CP 1092	820.88
CP 1093	819.07

LEGEND

- ELEC ELECTRICAL LINE
- WATER WATER LINE
- F FIBER OPTIC LINE
- MAIN ESCAPE ROUTE
- SECONDARY ESCAPE ROUTE
- ELECTRIC SUBSTATION
- ELECTRICAL BOX
- ☎ TELEPHONE
- ⊕ FIRST AID
- △ LAG BOLT IN WALL
- ⊕ SURVEY MARKER NAIL IN WALL
- IRON PIPE IN WALL
- ⊕ WOOD HUB IN GROUND
- ⊕ DRILL STEEL MONUMENT IN WALL
- ⊕ 2013 SURFACE CONTROL MONUMENT



SURFACE CONTROL POINT COORDINATES REFERENCED TO PIERCE COUNTY COORDINATE SYSTEM			
PT NO.	NORTHING	EASTING	ELEVATION
2001	255332.281	532418.010	1077.52
2002	255341.674	534183.858	1079.35
2005	255590.990	534603.826	1086.98
2010	256925.624	533675.772	1041.34
2011	257180.980	533532.659	1060.72
2012	256426.586	532577.032	936.76
2013	256461.456	531944.106	895.88
2014	257698.991	525134.181	687.51
2015	252844.147	530263.468	707.19

SHEET NO. F-3

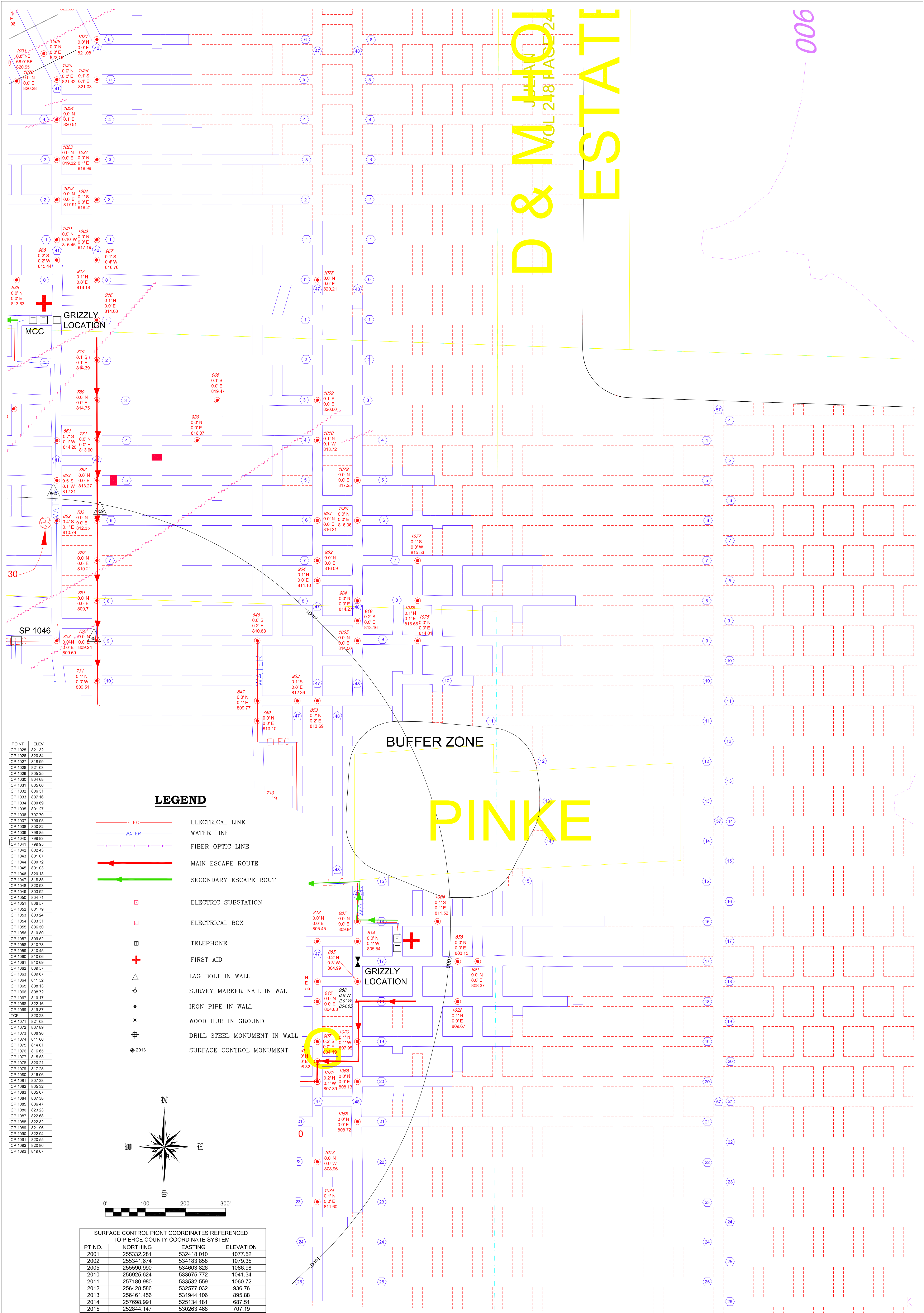
PROJECT NO.	CAD FILE	SURVEYED BY	DRAWN BY	APPROVED BY	NO.	DATE	REVISIONS	BY
19-0628	19-0628.dwg	TMH	TMH					
DATE	CRD FILE	SURVEY DATE	CHECKED BY	SCALE				
3/3/2019	19-0628.crd	3/1/2019	TMH	1"=100'				

WISCONSIN INDUSTRIAL SAND COMPANY, LLC
A DIVISION OF COVIA HOLDINGS CORP.
MAIDEN ROCK, WISCONSIN
CONTROL POINT LOCATION MAP

HEALY LAND SURVEYING
Healy Land Surveying
P.O. Box 221
Niagara, WI 54151
Phone: 715-548-0566
info@healysurveying.com

D & M HOLDINGS ESTATE

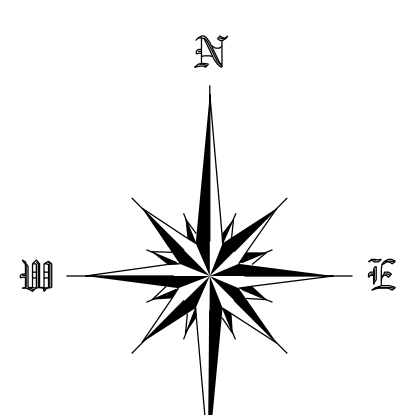
006



POINT	ELEV
CP 1025	821.32
CP 1026	820.84
CP 1027	818.99
CP 1028	821.03
CP 1029	805.25
CP 1030	804.68
CP 1031	805.00
CP 1032	806.31
CP 1033	807.16
CP 1034	806.69
CP 1035	801.27
CP 1036	797.70
CP 1037	799.95
CP 1038	800.82
CP 1039	799.85
CP 1040	799.83
CP 1041	799.85
CP 1042	802.43
CP 1043	801.07
CP 1044	800.72
CP 1045	801.03
CP 1046	820.13
CP 1047	818.85
CP 1048	820.93
CP 1049	803.92
CP 1050	804.71
CP 1051	806.57
CP 1052	801.79
CP 1053	803.24
CP 1054	803.51
CP 1055	806.50
CP 1056	810.80
CP 1057	809.52
CP 1058	810.78
CP 1059	810.45
CP 1060	810.06
CP 1061	810.69
CP 1062	809.57
CP 1063	809.67
CP 1064	811.52
CP 1065	808.13
CP 1066	808.72
CP 1067	810.17
CP 1068	822.16
CP 1069	819.87
TCP	820.28
CP 1071	821.08
CP 1072	807.89
CP 1073	805.96
CP 1074	811.60
CP 1075	814.01
CP 1076	816.85
CP 1077	815.53
CP 1078	820.21
CP 1079	817.25
CP 1080	816.06
CP 1081	807.38
CP 1082	805.32
CP 1083	805.07
CP 1084	807.38
CP 1085	806.47
CP 1086	823.23
CP 1087	822.68
CP 1088	822.82
CP 1089	821.96
CP 1090	822.94
CP 1091	820.55
CP 1092	820.86
CP 1093	819.07

LEGEND

- ELEC — ELECTRICAL LINE
- WATER — WATER LINE
- FIBER OPTIC LINE
- MAIN ESCAPE ROUTE
- SECONDARY ESCAPE ROUTE
- ELECTRIC SUBSTATION
- ELECTRICAL BOX
- + TELEPHONE
- + FIRST AID
- △ LAG BOLT IN WALL
- ⊕ SURVEY MARKER NAIL IN WALL
- IRON PIPE IN WALL
- ⊗ WOOD HUB IN GROUND
- ⊕ DRILL STEEL MONUMENT IN WALL
- ⬇ 2013 SURFACE CONTROL MONUMENT



SURFACE CONTROL POINT COORDINATES REFERENCED TO PIERCE COUNTY COORDINATE SYSTEM			
PT NO.	NORTHING	EASTING	ELEVATION
2001	255332.281	532418.010	1077.52
2002	255341.674	534183.858	1079.35
2005	255590.990	534603.826	1086.98
2010	256925.624	533675.772	1041.34
2011	257180.980	533532.559	1060.72
2012	256428.586	532577.032	936.76
2013	256461.456	531944.106	895.88
2014	257698.991	525134.181	687.51
2015	252844.147	530263.468	707.19

SHEET NO. F-4

PROJECT NO.	CAD FILE	SURVEYED BY	DRAWN BY	APPROVED BY	NO.	DATE	REVISIONS	BY
19-0628	19-0628.dwg	TMH	TMH					
DATE	CRD FILE	SURVEY DATE	CHECKED BY	SCALE				
3/3/2019	19-0628.crd	3/1/2019	TMH	1"=100'				

WISCONSIN INDUSTRIAL SAND COMPANY, LLC
A DIVISION OF COVIA HOLDINGS CORP.
MAIDEN ROCK, WISCONSIN
CONTROL POINT LOCATION MAP

Healy Land Surveying
P.O. Box 221
Niagara, WI 54151
Phone: 715-548-0566
info@healysurveying.com

AUGHLIN

BUFFER ZONE

PINKE

BUFFER ZONE

EXISTING BUILDING 230' ± FROM NEAREST EXISTING TUNNEL

BUFFER ZONE

BUFFER ZONE

ENBERG

GRIZZLY LOCATION

BL 1080

WISC DALEIDEN

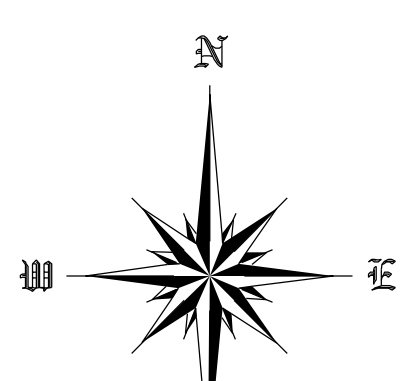
RIEPPER ZONE

BUFFER ZONE

POINT	ELEV
CP 1025	821.32
CP 1026	820.84
CP 1027	818.99
CP 1028	821.03
CP 1029	805.25
CP 1030	804.68
CP 1031	805.00
CP 1032	806.31
CP 1033	807.16
CP 1034	800.69
CP 1035	801.27
CP 1036	797.70
CP 1037	799.95
CP 1038	800.82
CP 1039	799.85
CP 1040	799.83
CP 1041	799.95
CP 1042	802.43
CP 1043	801.07
CP 1044	800.72
CP 1045	801.03
CP 1046	820.13
CP 1047	818.85
CP 1048	820.93
CP 1049	803.92
CP 1050	804.71
CP 1051	806.57
CP 1052	801.79
CP 1053	803.24
CP 1054	803.31
CP 1055	806.50
CP 1056	810.80
CP 1057	809.52
CP 1058	810.76
CP 1059	810.45
CP 1060	810.06
CP 1061	810.69
CP 1062	809.57
CP 1063	809.67
CP 1064	811.52
CP 1065	808.13
CP 1066	808.72
CP 1067	810.17
CP 1068	822.16
CP 1069	819.87
TCP	820.28
CP 1071	821.08
CP 1072	807.89
CP 1073	808.96
CP 1074	811.60
CP 1075	814.01
CP 1076	816.85
CP 1077	815.53
CP 1078	820.21
CP 1079	817.25
CP 1080	816.06
CP 1081	807.38
CP 1082	805.32
CP 1083	805.07
CP 1084	807.38
CP 1085	806.47
CP 1086	823.23
CP 1087	822.68
CP 1088	822.82
CP 1089	821.96
CP 1090	822.94
CP 1091	820.55
CP 1092	820.86
CP 1093	819.07

LEGEND

- ELEC — ELECTRICAL LINE
- WATER — WATER LINE
- F — FIBER OPTIC LINE
- — MAIN ESCAPE ROUTE
- — SECONDARY ESCAPE ROUTE
- — ELECTRIC SUBSTATION
- — ELECTRICAL BOX
- ☎ — TELEPHONE
- ⊕ — FIRST AID
- △ — LAG BOLT IN WALL
- ⊕ — SURVEY MARKER NAIL IN WALL
- — IRON PIPE IN WALL
- ⊕ — WOOD HUB IN GROUND
- ⊕ — DRILL STEEL MONUMENT IN WALL
- ⊕ — SURFACE CONTROL MONUMENT



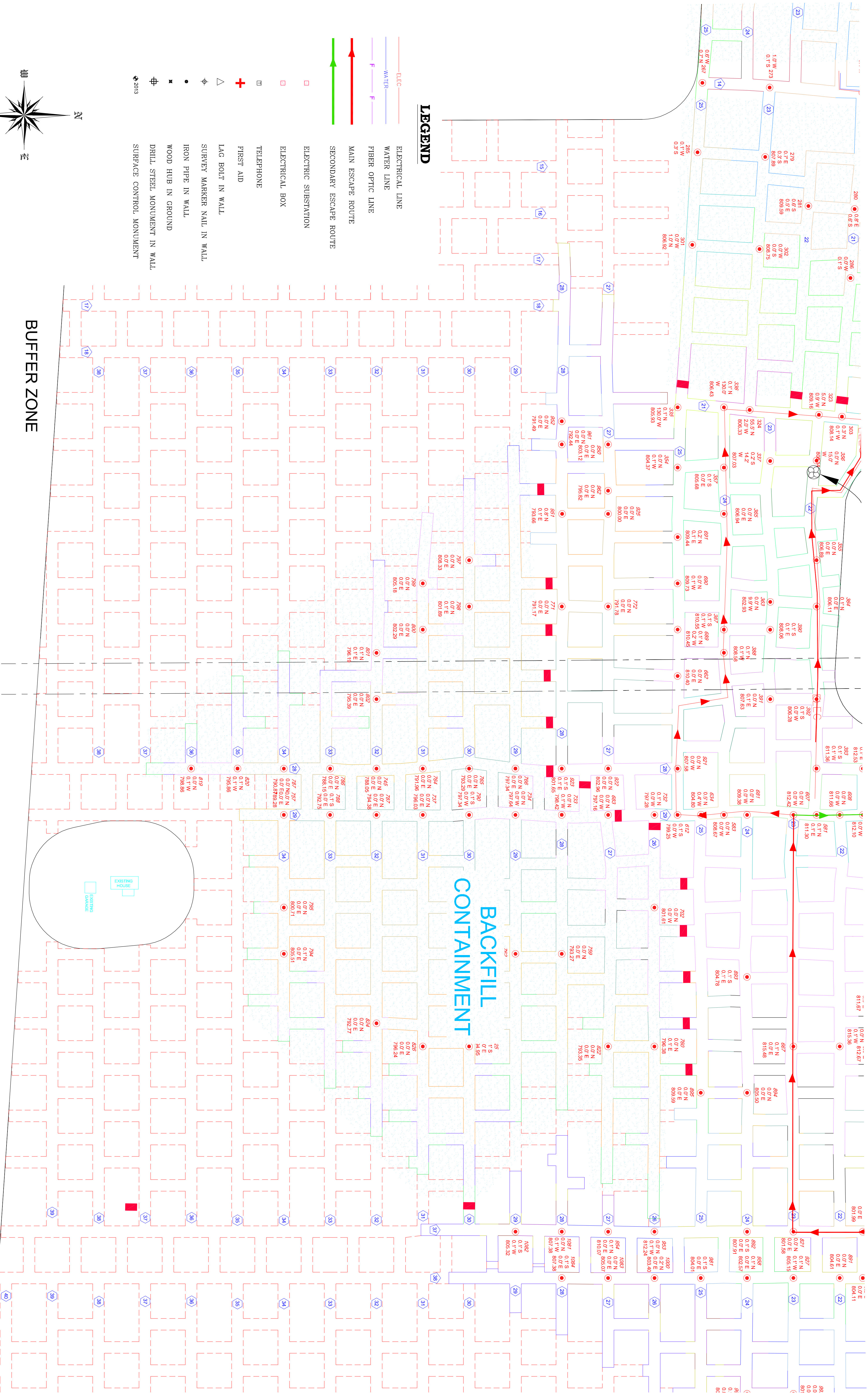
SURFACE CONTROL POINT COORDINATES REFERENCED TO PIERCE COUNTY COORDINATE SYSTEM			
PT NO.	NORTHING	EASTING	ELEVATION
2001	255332.281	532418.010	1077.52
2002	255341.674	534183.858	1079.35
2005	255590.990	534603.826	1086.98
2010	256925.624	533675.772	1041.34
2011	257180.980	533532.659	1060.72
2012	256426.586	532577.032	936.76
2013	256461.456	531944.106	895.88
2014	257698.991	525134.181	687.51
2015	252844.147	530263.468	707.19

F-5 SHEET NO.

PROJECT NO.	CAD FILE	SURVEYED BY	DRAWN BY	APPROVED BY	NO.	DATE	REVISIONS	BY
19-0628	19-0628.dwg	TMH	TMH					
DATE	CRD FILE	SURVEY DATE	CHECKED BY	SCALE				
3/3/2019	19-0628.crd	3/1/2019	TMH	1"=100'				

WISCONSIN INDUSTRIAL SAND COMPANY, LLC
 A DIVISION OF COVIA HOLDINGS CORP.
 MAIDEN ROCK, WISCONSIN
 CONTROL POINT LOCATION MAP

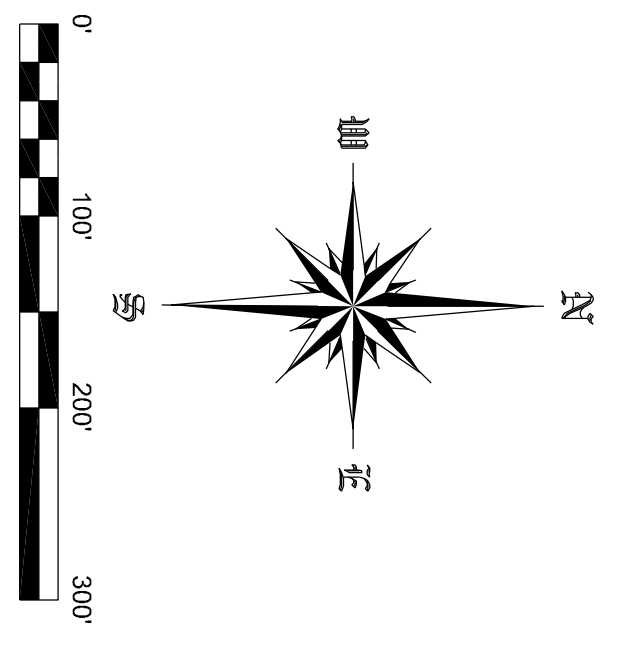
Healy Land Surveying
 P.O. Box 221
 Niagara, WI 54151
 Phone: 715-548-0566
 info@healysurveying.com



POINT	ELEV
CP-1025	821.32
CP-1026	820.34
CP-1027	818.99
CP-1028	821.03
CP-1029	805.25
CP-1030	804.68
CP-1031	805.00
CP-1032	806.31
CP-1033	807.16
CP-1034	800.09
CP-1035	801.27
CP-1036	799.70
CP-1037	799.95
CP-1038	800.82
CP-1039	799.85
CP-1040	799.83
CP-1041	799.83
CP-1042	802.43
CP-1043	801.07
CP-1044	800.72
CP-1046	820.13
CP-1047	818.85
CP-1048	820.53
CP-1049	823.92
CP-1050	804.71
CP-1051	808.57
CP-1052	807.79
CP-1053	803.24
CP-1054	803.31
CP-1055	806.50
CP-1056	810.80
CP-1057	809.82
CP-1058	810.78
CP-1059	810.45
CP-1060	810.06
CP-1061	810.69
CP-1062	809.57
CP-1063	809.67
CP-1064	811.52
CP-1065	808.13
CP-1067	810.17
CP-1068	808.72
CP-1069	819.87
CP-1071	821.08
CP-1072	807.89
CP-1073	808.96
CP-1074	811.60
CP-1075	814.01
CP-1076	816.65
CP-1077	815.53
CP-1078	820.21
CP-1079	817.25
CP-1080	810.06
CP-1081	807.38
CP-1082	805.32
CP-1083	805.07
CP-1084	807.38
CP-1085	806.47
CP-1086	823.23
CP-1087	822.88
CP-1088	822.82
CP-1089	821.96
CP-1090	822.34
CP-1091	820.55
CP-1092	820.66
CP-1093	819.07

LEGEND

- ELECTRICAL LINE
- WATER LINE
- FIBER OPTIC LINE
- MAIN ESCAPE ROUTE
- SECONDARY ESCAPE ROUTE
- ELECTRIC SUBSTATION
- ELECTRICAL BOX
- TELEPHONE
- FIRST AID
- LAG BOLT IN WALL
- SURVEY MARKER NAIL IN WALL
- IRON PIPE IN WALL
- WOOD HUB IN GROUND
- DRILL STEEL MONUMENT IN WALL
- SURFACE CONTROL MONUMENT



SURFACE CONTROL POINT COORDINATES REFERENCED TO PIERCE COUNTY COORDINATE SYSTEM

PT NO.	NORTHING	EASTING	ELEVATION
2001	255332.281	532418.010	1077.52
2002	255341.674	534183.858	1079.35
2005	255590.980	534603.826	1086.98
2010	255925.624	535675.772	1041.34
2011	257180.980	533532.589	1060.72
2012	258428.988	532977.032	895.76
2013	259461.458	531341.186	892.88
2014	259343.441	531341.186	892.88
2015	252844.147	530283.488	707.19

BUFFER ZONE

BACKFILL CONTAINMENT

PROJECT NO.	19-0628	CAD FILE	19-0628.dwg	SURVEYED BY	TMH	DRAWN BY	TMH	APPROVED BY	
DATE	3/3/2019	CRD FILE	19-0628.crd	SURVEY DATE	3/1/2019	CHECKED BY	TMH	SCALE	1"=100'

NO.	DATE	REVISIONS	BY

WISCONSIN INDUSTRIAL SAND COMPANY, LLC
A DIVISION OF COVIA HOLDINGS CORP.
MAIDEN ROCK, WISCONSIN
CONTROL POINT LOCATION MAP

Healy Land Surveying
P.O. Box 221
Niagara, WI 54151
Phone: 715-548-0566
info@healysurveying.com