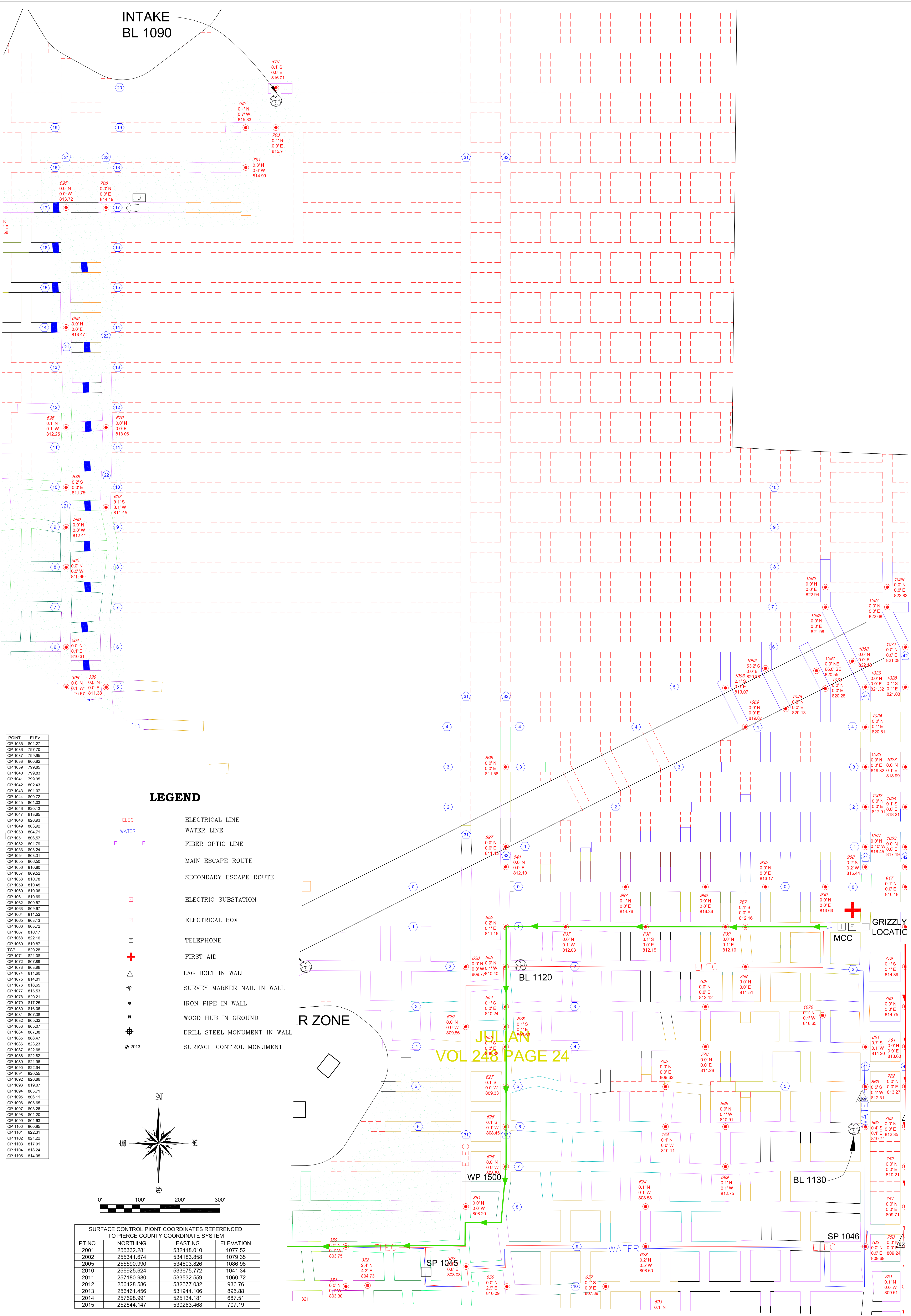


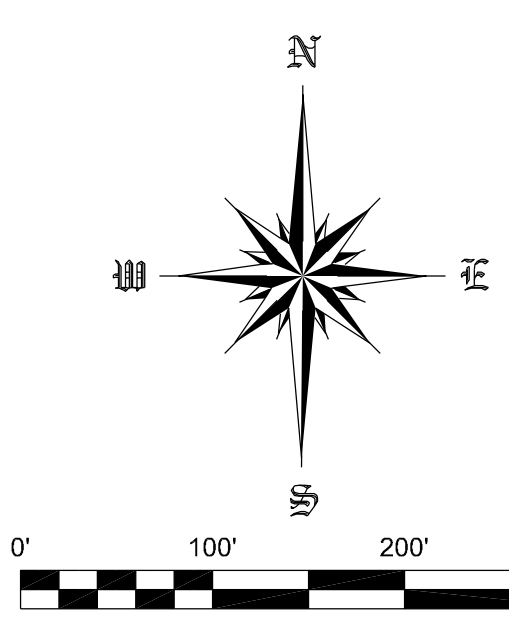
INTAKE
BL 1090



| POINT | ELEV |
|---------|--------|
| CP 1035 | 801.27 |
| CP 1036 | 797.70 |
| CP 1037 | 799.95 |
| CP 1038 | 800.82 |
| CP 1039 | 799.85 |
| CP 1040 | 799.83 |
| CP 1041 | 799.95 |
| CP 1042 | 802.43 |
| CP 1043 | 801.07 |
| CP 1044 | 800.72 |
| CP 1045 | 801.03 |
| CP 1046 | 820.13 |
| CP 1047 | 818.85 |
| CP 1048 | 820.93 |
| CP 1049 | 803.92 |
| CP 1050 | 804.71 |
| CP 1051 | 806.57 |
| CP 1052 | 801.79 |
| CP 1053 | 803.34 |
| CP 1054 | 803.31 |
| CP 1055 | 806.50 |
| CP 1056 | 810.80 |
| CP 1057 | 809.52 |
| CP 1058 | 810.78 |
| CP 1059 | 810.45 |
| CP 1060 | 810.06 |
| CP 1061 | 810.89 |
| CP 1062 | 809.57 |
| CP 1063 | 809.67 |
| CP 1064 | 811.62 |
| CP 1065 | 808.13 |
| CP 1066 | 808.72 |
| CP 1067 | 810.17 |
| CP 1068 | 822.16 |
| CP 1069 | 819.87 |
| TCP | 820.28 |
| CP 1071 | 821.08 |
| CP 1072 | 807.89 |
| CP 1073 | 808.96 |
| CP 1074 | 811.60 |
| CP 1075 | 814.01 |
| CP 1076 | 816.85 |
| CP 1077 | 815.53 |
| CP 1078 | 820.21 |
| CP 1079 | 817.25 |
| CP 1080 | 816.06 |
| CP 1081 | 807.38 |
| CP 1082 | 805.32 |
| CP 1083 | 805.07 |
| CP 1084 | 807.38 |
| CP 1085 | 806.47 |
| CP 1086 | 823.23 |
| CP 1087 | 822.68 |
| CP 1088 | 822.82 |
| CP 1089 | 821.96 |
| CP 1090 | 822.94 |
| CP 1091 | 820.55 |
| CP 1092 | 820.86 |
| CP 1093 | 819.07 |
| CP 1094 | 805.71 |
| CP 1095 | 806.11 |
| CP 1096 | 805.65 |
| CP 1097 | 803.28 |
| CP 1098 | 801.20 |
| CP 1099 | 801.83 |
| CP 1100 | 800.85 |
| CP 1101 | 822.31 |
| CP 1102 | 821.22 |
| CP 1103 | 817.91 |
| CP 1104 | 818.24 |
| CP 1105 | 814.05 |

LEGEND

- ELEC ELECTRICAL LINE
- WATER WATER LINE
- F FIBER OPTIC LINE
- MAIN ESCAPE ROUTE
- SECONDARY ESCAPE ROUTE
- ELECTRIC SUBSTATION
- ELECTRICAL BOX
- ☎ TELEPHONE
- ⊕ FIRST AID
- △ LAG BOLT IN WALL
- ⊕ SURVEY MARKER NAIL IN WALL
- IRON PIPE IN WALL
- ⊕ WOOD HUB IN GROUND
- ⊕ DRILL STEEL MONUMENT IN WALL
- ⊕ 2013 SURFACE CONTROL MONUMENT



| SURFACE CONTROL POINT COORDINATES REFERENCED TO PIERCE COUNTY COORDINATE SYSTEM | | | |
|---|------------|------------|-----------|
| PT NO. | NORTHING | EASTING | ELEVATION |
| 2001 | 255332.281 | 532418.010 | 1077.52 |
| 2002 | 255341.674 | 534183.858 | 1079.35 |
| 2005 | 255590.990 | 534603.826 | 1086.98 |
| 2010 | 256925.624 | 533675.772 | 1041.34 |
| 2011 | 257180.980 | 533532.659 | 1060.72 |
| 2012 | 256426.586 | 532577.032 | 936.76 |
| 2013 | 256461.456 | 531944.106 | 895.88 |
| 2014 | 257698.991 | 525134.181 | 687.51 |
| 2015 | 252844.147 | 530263.468 | 707.19 |

SHEET NO.
F-3

| PROJECT NO. | CAD FILE | SURVEYED BY | DRAWN BY | APPROVED BY | NO. | DATE | REVISIONS | BY |
|-------------|-------------|-------------|------------|-------------|-----|-----------|-----------|-----|
| 19-0633 | 19-0633.dwg | TMH | TMH | | | | | |
| DATE | CRD FILE | SURVEY DATE | CHECKED BY | SCALE | | | | |
| 3/29/2019 | 19-0633.crd | 3/28/2019 | TMH | 1"=100' | | | | |
| | | | | | 1 | 4/15/2019 | BUFFERS | TMH |

WISCONSIN INDUSTRIAL SAND COMPANY, LLC
A DIVISION OF COVIA HOLDINGS CORP.
MAIDEN ROCK, WISCONSIN
CONTROL POINT LOCATION MAP

HEALY LAND SURVEYING
Healy Land Surveying
P.O. Box 221
Niagara, WI 54151
Phone: 715-548-0566
info@healysurveying.com