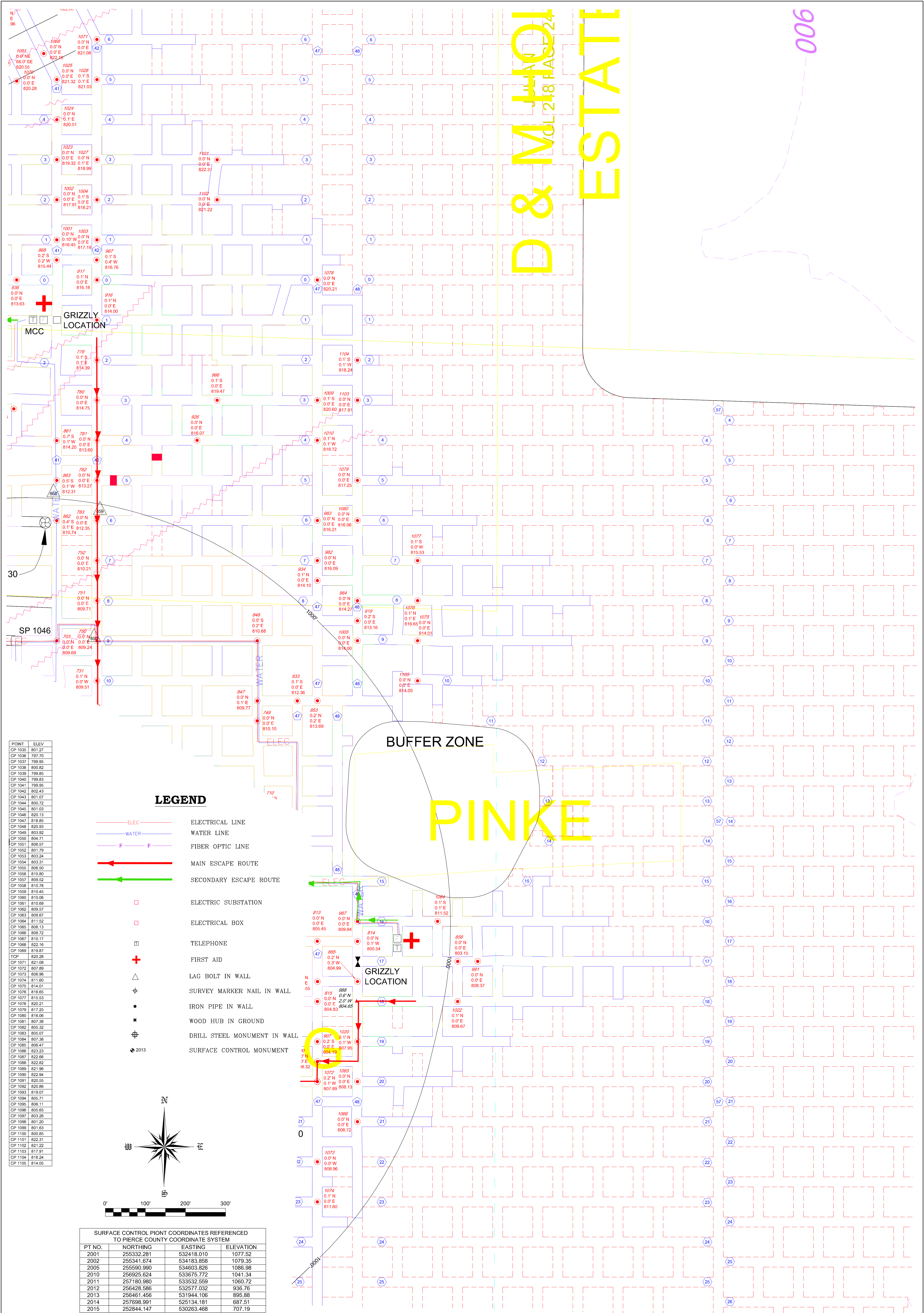


D & M HOLDINGS ESTATE

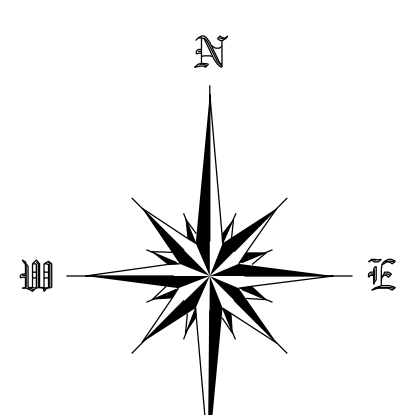
006



POINT	ELEV
CP 1035	801.27
CP 1036	797.70
CP 1037	799.85
CP 1038	800.82
CP 1039	799.85
CP 1040	799.83
CP 1041	799.95
CP 1042	802.43
CP 1043	801.07
CP 1044	800.72
CP 1045	801.03
CP 1046	805.73
CP 1047	818.65
CP 1048	820.93
CP 1049	803.92
CP 1050	804.71
CP 1051	805.57
CP 1052	801.79
CP 1053	803.24
CP 1054	803.31
CP 1055	806.50
CP 1056	810.80
CP 1057	809.52
CP 1058	810.78
CP 1059	810.45
CP 1060	810.08
CP 1061	810.69
CP 1062	809.57
CP 1063	809.87
CP 1064	811.52
CP 1065	808.13
CP 1066	808.72
CP 1067	810.17
CP 1068	822.18
CP 1069	819.87
CP 1071	821.08
CP 1072	807.89
CP 1073	808.98
CP 1074	811.60
CP 1075	814.01
CP 1076	818.65
CP 1077	815.53
CP 1078	820.21
CP 1079	817.25
CP 1080	816.06
CP 1081	807.38
CP 1082	805.32
CP 1083	805.07
CP 1084	807.38
CP 1085	808.47
CP 1086	823.23
CP 1087	822.89
CP 1088	822.82
CP 1089	821.96
CP 1090	822.94
CP 1091	820.55
CP 1092	820.86
CP 1093	819.07
CP 1094	805.71
CP 1095	806.11
CP 1096	805.65
CP 1097	803.26
CP 1098	801.20
CP 1099	801.83
CP 1100	800.85
CP 1101	823.31
CP 1102	821.22
CP 1103	817.91
CP 1104	818.24
CP 1105	814.05

LEGEND

- ELEC ELECTRICAL LINE
- WATER WATER LINE
- F FIBER OPTIC LINE
- MAIN ESCAPE ROUTE
- SECONDARY ESCAPE ROUTE
- ELECTRIC SUBSTATION
- ELECTRICAL BOX
- ⊕ TELEPHONE
- ⊕ FIRST AID
- △ LAG BOLT IN WALL
- ⊕ SURVEY MARKER NAIL IN WALL
- IRON PIPE IN WALL
- ⊕ WOOD HUB IN GROUND
- ⊕ DRILL STEEL MONUMENT IN WALL
- ⊕ SURFACE CONTROL MONUMENT



PT NO.	NORTHING	EASTING	ELEVATION
2001	255332.281	532418.010	1077.52
2002	255341.674	534183.858	1079.35
2005	255590.900	534603.826	1086.98
2010	256925.624	533675.772	1041.34
2011	257180.980	533532.559	1060.72
2012	256428.586	532577.032	936.76
2013	256461.456	531944.106	895.88
2014	257698.991	525134.181	687.51
2015	252844.147	530263.468	707.19

SHEET NO. F-4

PROJECT NO.	CAD FILE	SURVEYED BY	DRAWN BY	APPROVED BY	NO.	DATE	REVISIONS	BY
19-0633	19-0633.dwg	TMH	TMH					
DATE	CRD FILE	SURVEY DATE	CHECKED BY	SCALE				
3/29/2019	19-0633.crd	3/28/2019	TMH	1"=100'	1	4/15/2019	BUFFERS	TMH

WISCONSIN INDUSTRIAL SAND COMPANY, LLC
A DIVISION OF COVIA HOLDINGS CORP.
MAIDEN ROCK, WISCONSIN
CONTROL POINT LOCATION MAP

Healy Land Surveying
P.O. Box 221
Niagara, WI 54151
Phone: 715-548-0566
info@healysurveying.com