

SURFACE CONTROL POINT COORDINATES REFERENCED TO PERCE COUNTY COORDINATE SYSTEM

PT NO.	NORTHING	EASTING	ELEVATION
2001	255341.674	534183.898	1079.35
2002	255341.674	534183.898	1079.35
2005	255690.980	534603.826	1086.98
2010	256925.624	533675.772	1041.34
2011	257180.980	533532.559	1060.72
2012	256428.586	532577.032	936.76
2013	256461.456	531944.106	895.88
2014	257698.991	528134.181	897.51
2015	252844.147	530283.488	707.19

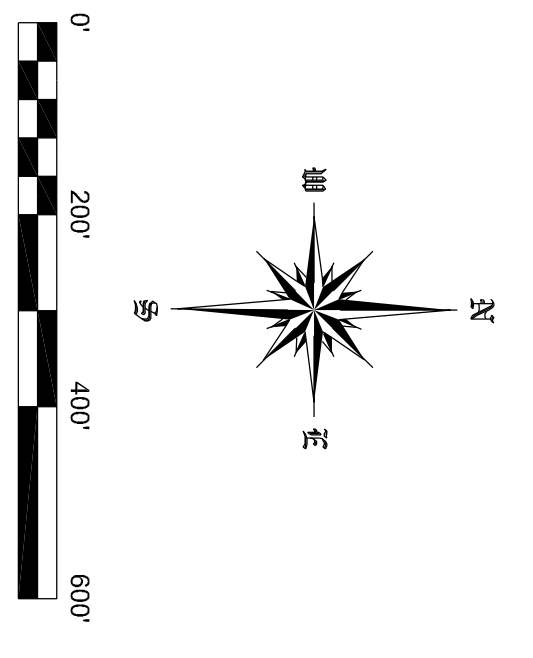
AIRFLOW READINGS AS OF MARCH 22, 2018

POINT	CMV	DIRECTION	LOCATION
A	78.834	NORTH	C.I.H. INTAKE FAN (N)
B	104.341	EAST	C.I.H. INTAKE FAN (E)
D	215.098	WEST	SOUTH INTAKE FAN
F	9.021	SOUTH	SOUTHWEST ADT EXHAUST
N	79.619	WEST	TUNNEL NO. 14 WEST EXHAUST
O	68.719	WEST	TUNNEL NO. 15 WEST EXHAUST
P	88.959	WEST	TUNNEL NO. 16 WEST EXHAUST
Q	3.239	NORTH	NORTH GATE AT SECONDARY PORTAL
R	2.586	NORTH	MAIN GATE AT SECONDARY PORTAL
S	156.184	SOUTH	MAIN PORTAL

LEGEND

- ELECTRICAL LINE
- WATER LINE
- FIBER OPTIC LINE
- MAIN ESCAPE ROUTE
- SECONDARY ESCAPE ROUTE
- FIRST AID
- ELECTRIC SUBSTATION
- ELECTRICAL BOX
- PLC CONTROL
- TELEPHONE
- SURFACE CONTROL MONUMENT
- FRESH AIR FLOW
- EXHAUST AIR FLOW
- AIR STOPPINGS
- AIR STOPPINGS WITH DOORS
- BERM
- ABANDONED AREA

NOTE: ALL FANS ARE CONTROLLED BY PLC CONTROLS

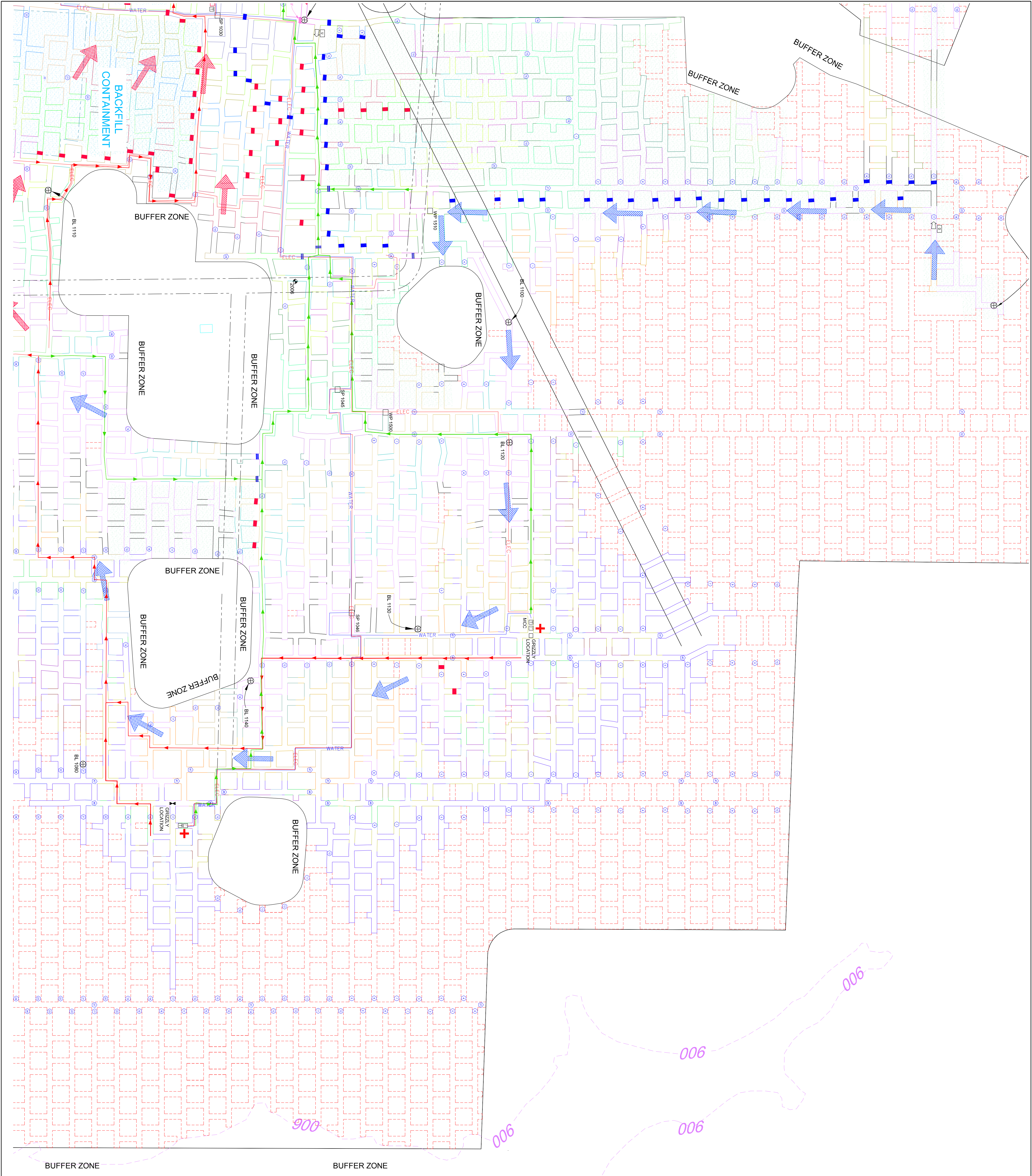


G-1
SHEET NO.

PROJECT NO. 19-0633	CAD FILE 19-0633.dwg	SURVEYED BY TMH	DRAWN BY TMH	APPROVED BY	NO.	DATE	REVISIONS	BY
DATE 3/29/2019	CRD FILE 19-0633.crd	SURVEY DATE 3/28/2019	CHECKED BY TMH	SCALE 1"=200'	1	4/15/2019	BUFFERS	TMH

WISCONSIN INDUSTRIAL SAND COMPANY, LLC
A DIVISION OF FAIRMOUNTSANTROL
MAIDEN ROCK, WISCONSIN
VENTILATION DETAIL MAP

Healy Land Surveying
P.O. Box 221
Niagara, WI 54151
Phone: 715-548-0566
info@healysurveying.com



SURFACE CONTROL POINT COORDINATES REFERENCED TO HERCULE COUNTY COORDINATE SYSTEM

PT NO.	NORTHING	EASTING	ELEVATION
2000	255341.674	534183.898	1079.26
2002	255341.674	534183.898	1079.26
2005	255690.980	534603.826	1086.98
2010	256825.624	533675.772	1041.34
2011	257180.980	533532.569	1060.72
2012	256428.586	532577.032	936.76
2013	256461.456	531944.106	895.88
2014	257698.991	525134.181	897.51
2015	252844.147	530283.488	707.19

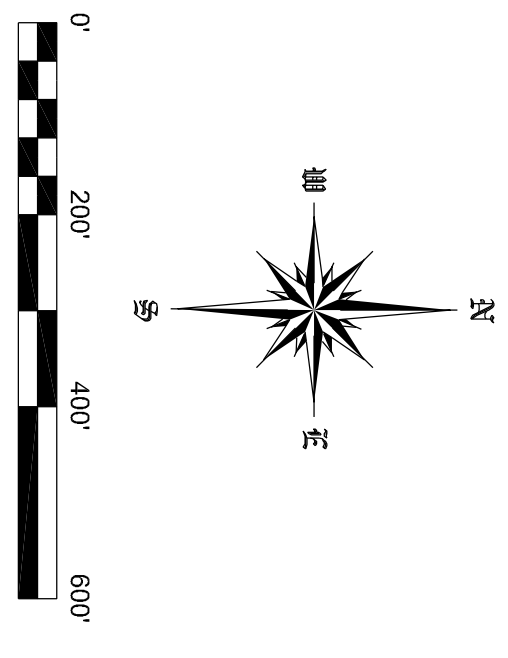
AIRFLOW READINGS AS OF MARCH 22, 2018

POINT	CFM	DIRECTION	LOCATION
A	763.94	NORTH	C.T.H. S/N TAKE FAN (N)
B	104,341	EAST	C.T.H. S/N TAKE FAN (E)
D	215,098	WEST	SOUTHWEST ADIT EXHAUST
F	9,021	SOUTH	"SMITH" INTAKE FAN
N	79,619	WEST	TUNNEL NO. 14 WEST EXHAUST
O	68,219	WEST	TUNNEL NO. 16 WEST EXHAUST
P	88,495	WEST	TUNNEL NO. 15 WEST EXHAUST
Q	3,239	NORTH	NORTH GATE AT SECONDARY PORTAL
R	2,586	NORTH	MAIN GATE AT SECONDARY PORTAL
S	156,184	SOUTH	MAIN PORTAL

LEGEND

- ELECTRICAL LINE
- WATER LINE
- FIBER OPTIC LINE
- MAIN ESCAPE ROUTE
- SECONDARY ESCAPE ROUTE
- FIRST AID
- ELECTRIC SUBSTATION
- ELECTRICAL BOX
- PLC CONTROL
- TELEPHONE
- SURFACE CONTROL MONUMENT
- FRESH AIR FLOW
- EXHAUST AIR FLOW
- AIR STOPPINGS
- AIR STOPPINGS WITH DOORS
- BERM
- ABANDONED AREA

NOTE: ALL FANS ARE CONTROLLED BY PLC CONTROLS

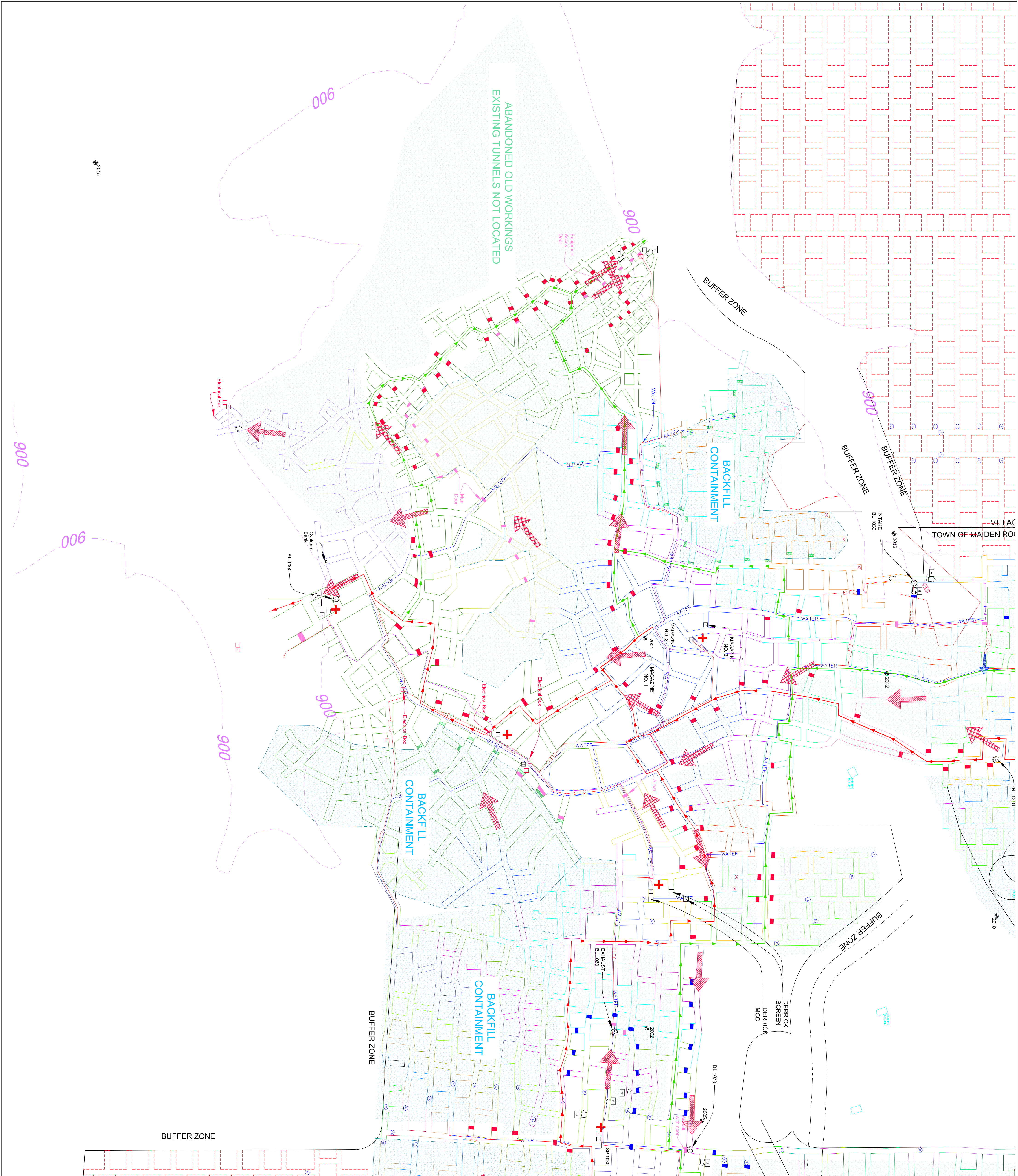


PROJECT NO.	CAD FILE	SURVEYED BY	DRAWN BY	APPROVED BY	NO.	DATE	REVISIONS	BY
19-0633	19-0633.dwg	TMH	TMH		1	4/15/2019	BUFFERS	TMH
DATE	CRD FILE	SURVEY DATE	CHECKED BY	SCALE				
3/29/2019	19-0633.crd	3/28/2019	TMH	1"=200'				

WISCONSIN INDUSTRIAL SAND COMPANY, LLC
 A DIVISION OF FAIRMOUNTSANTROL
 MAIDEN ROCK, WISCONSIN
 VENTILATION DETAIL MAP

HEALY
 LAND SURVEYING

Healy Land Surveying
 P.O. Box 221
 Niagara, WI 54151
 Phone: 715-548-0566
 info@healysurveying.com



SURFACE CONTROL POINT COORDINATES REFERENCED TO PERCHE COUNTY COORDINATE SYSTEM

PT NO.	NORTHING	EASTING	ELEVATION
2001	255341.674	534183.898	1079.36
2002	255341.674	534183.898	1079.36
2005	255690.980	534603.896	1086.98
2010	256925.624	533675.772	1041.34
2011	257180.980	533532.559	1060.72
2012	256428.586	532577.032	935.76
2013	256461.456	531944.106	895.88
2014	257698.991	528134.181	897.51
2015	252844.147	530283.488	707.19

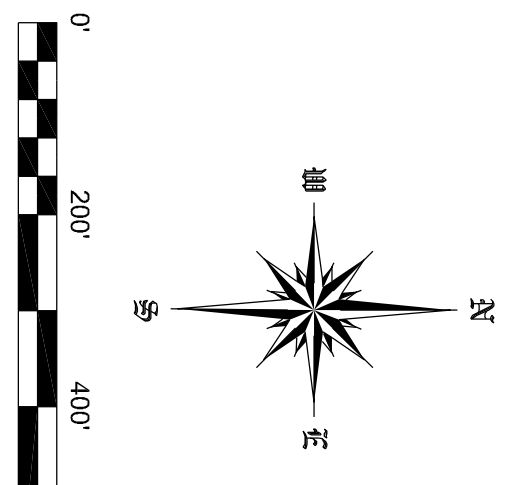
AIRFLOW READINGS AS OF MARCH 22, 2018

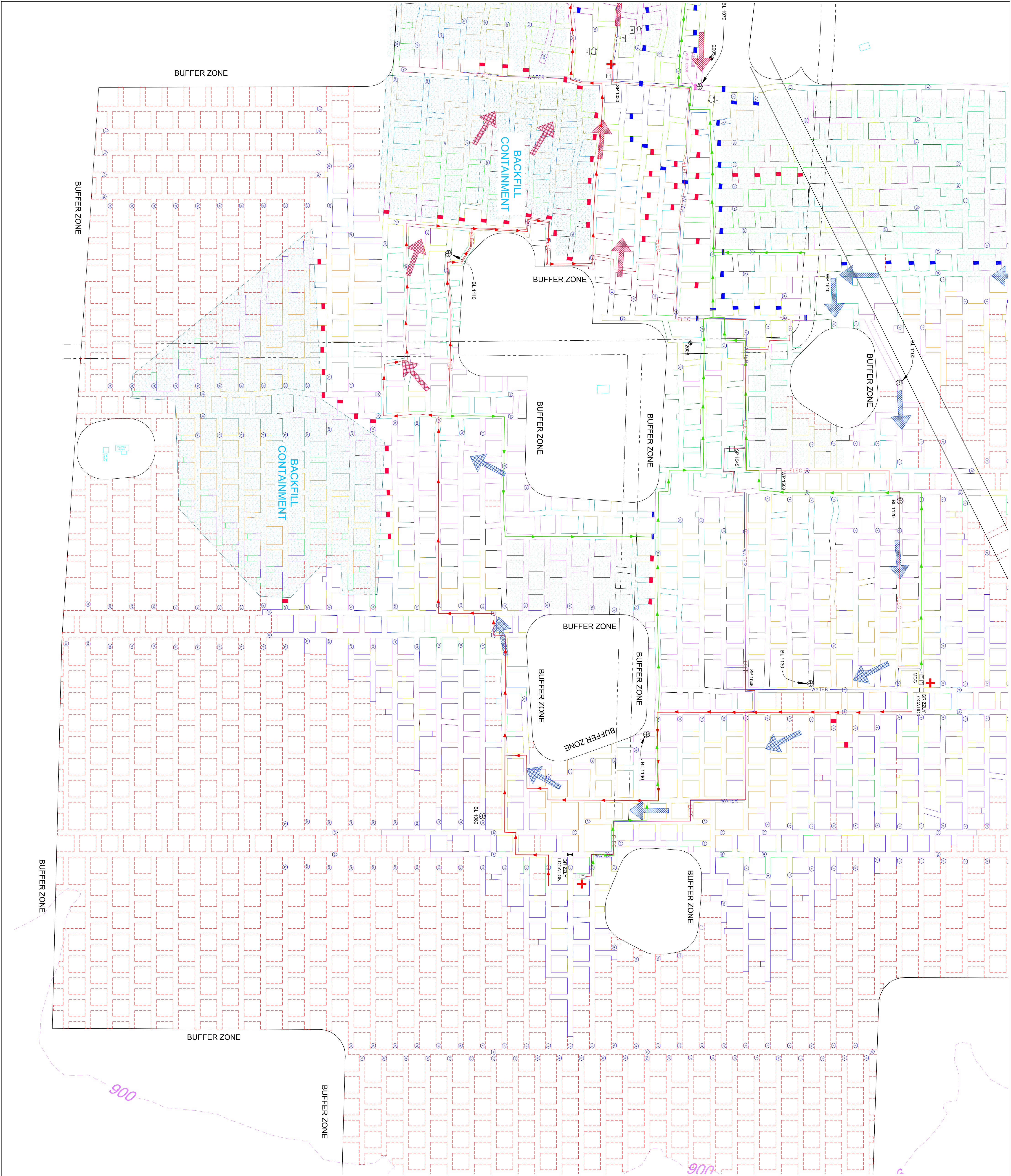
POINT	CMV	DIRECTION	LOCATION
A	78.034	NORTH	C.T.H. S INTAKE FAN (N)
B	104.341	EAST	C.T.H. S INTAKE FAN (E)
D	215.098	WEST	SOUTH INTAKE FAN
F	9.021	SOUTH	SOUTHWEST ADIT EXHAUST
N	79.619	WEST	TUNNEL NO. 14 WEST EXHAUST
O	68.219	WEST	TUNNEL NO. 16 WEST EXHAUST
P	88.495	WEST	TUNNEL NO. 15 WEST EXHAUST
Q	3.239	NORTH	NORTH GATE AT SECONDARY PORTAL
R	2.586	NORTH	MAIN GATE AT SECONDARY PORTAL
S	136.184	SOUTH	MAIN PORTAL

LEGEND

- ELEC. ELECTRICAL LINE
- WATER. WATER LINE
- FIBER. OPTIC LINE
- MAIN ESCAPE ROUTE
- SECONDARY ESCAPE ROUTE
- FIRST AID
- ELECTRIC SUBSTATION
- ELECTRICAL BOX
- PLC CONTROL
- TELEPHONE
- SURFACE CONTROL MONUMENT
- FRESH AIR FLOW
- EXHAUST AIR FLOW
- AIR STOPPINGS
- AIR STOPPINGS WITH DOORS
- BERM
- ABANDONED AREA

NOTE: ALL FANS ARE CONTROLLED BY PLC CONTROLS





SURFACE CONTROL POINT COORDINATES REFERENCED TO PERCHE COUNTY COORDINATE SYSTEM

PT NO.	NORTHING	EASTING	ELEVATION
2001	255341.674	634183.898	1079.35
2002	255341.674	634183.898	1079.35
2005	255690.980	634603.826	1086.98
2010	256925.624	633675.772	1041.34
2011	257180.980	633532.559	1060.72
2012	256428.586	632577.032	936.76
2013	256461.456	631944.106	895.88
2014	257698.991	628134.181	897.51
2015	252844.147	630283.488	707.19

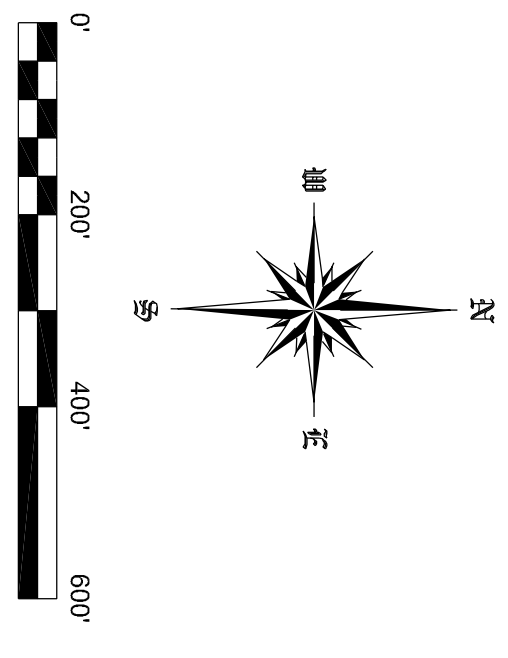
AIRFLOW READINGS AS OF MARCH 22, 2018

POINT	CMV	DIRECTION	LOCATION
A	78.634	NORTH	C.I.H. SINK FAN (N)
B	104.341	EAST	C.I.H. SINK FAN (E)
D	215.098	WEST	SOUTHWEST FAN
F	9.021	SOUTH	SOUTHWEST ADT EXHAUST
N	79.619	WEST	TUNNEL NO. 14 WEST EXHAUST
O	68.719	WEST	TUNNEL NO. 15 WEST EXHAUST
P	88.955	WEST	TUNNEL NO. 16 WEST EXHAUST
Q	3.239	NORTH	NORTH GATE AT SECONDARY PORTA
R	2.586	NORTH	MAIN GATE AT SECONDARY PORTA
S	136.184	SOUTH	MAIN PORTAL

LEGEND

- ELECTRICAL LINE
- WATER LINE
- FIBER OPTIC LINE
- MAIN ESCAPE ROUTE
- SECONDARY ESCAPE ROUTE
- FIRST AID
- ELECTRIC SUBSTATION
- ELECTRICAL BOX
- PLC CONTROL
- TELEPHONE
- SURFACE CONTROL MONUMENT
- FRESH AIR FLOW
- EXHAUST AIR FLOW
- AIR STOPPINGS
- AIR STOPPINGS WITH DOORS
- BERM
- ABANDONED AREA

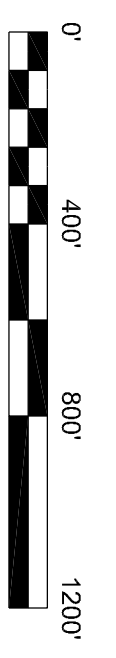
NOTE: ALL FANS ARE CONTROLLED BY PLC CONTROLS



LEGEND

- ELECTRICAL LINE
- WATER LINE
- FIBER OPTIC LINE
- MAIN ESCAPE ROUTE
- SECONDARY ESCAPE ROUTE
- + FIRST AID
- ELECTRIC SUBSTATION
- ELECTRICAL BOX
- PLC CONTROL
- TELEPHONE
- SURFACE CONTROL MONUMENT
- ↓ FRESH AIR FLOW
- ↓ EXHAUST AIR FLOW
- AIR STOPPINGS
- AIR STOPPINGS WITH DOORS
- BERK
- ABANDONED AREA

NOTE: ALL FANS ARE CONTROLLED BY PLC CONTROLS

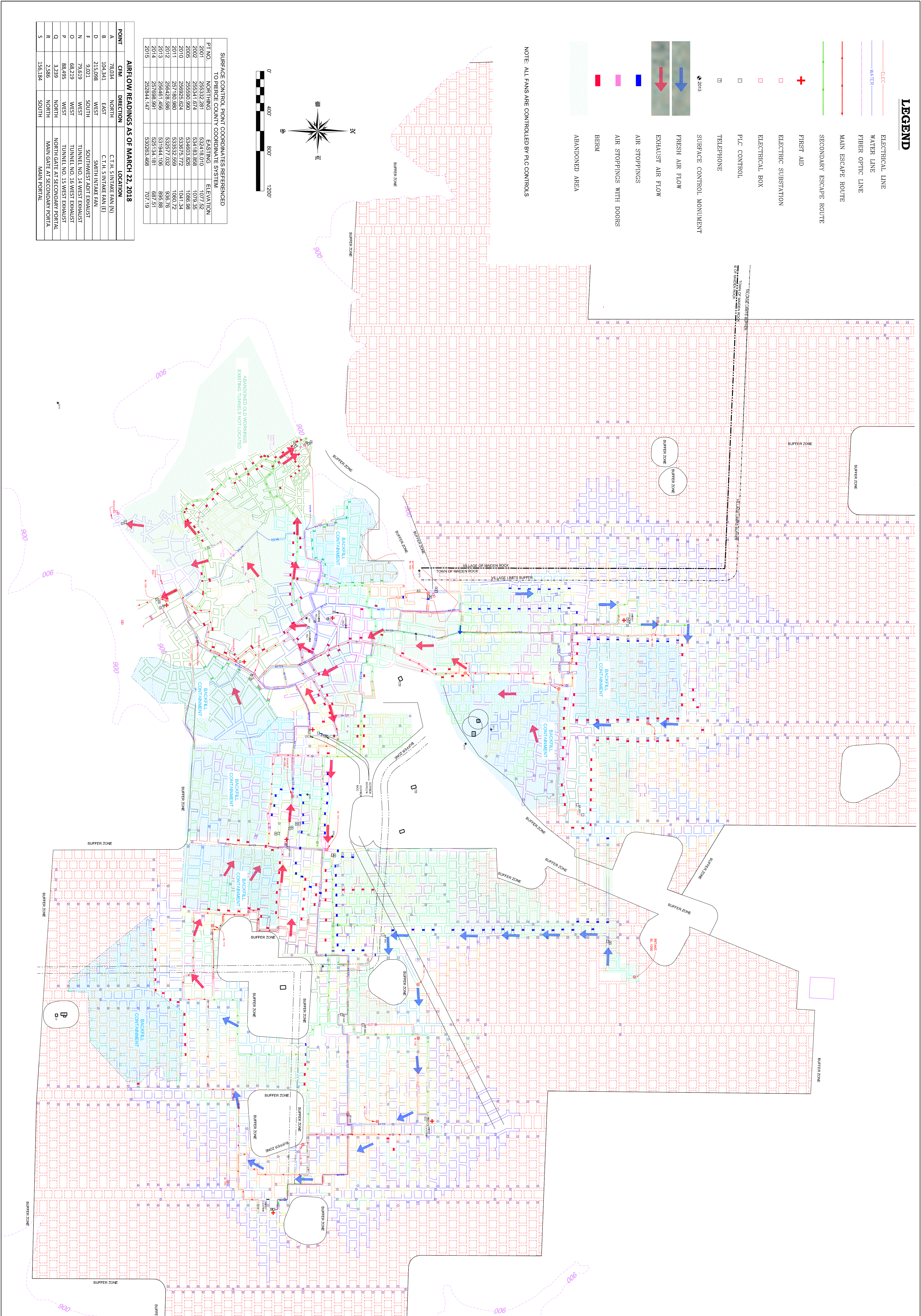


SURFACE CONTROL POINT COORDINATES REFERENCED TO PIERCE COUNTY COORDINATE SYSTEM

PT NO.	NORTHING	EASTING	ELEVATION
2001	255327.281	532418.010	1073.52
2002	255341.674	534183.888	1079.35
2005	255590.990	534603.826	1086.98
2010	256925.624	533675.772	1041.34
2011	257180.980	533552.589	1060.72
2012	256428.588	532577.032	938.76
2013	256461.466	531944.106	888.88
2014	256444.427	531944.106	879.44
2015	252844.147	530283.488	707.19

AIRFLOW READINGS AS OF MARCH 22, 2018

POINT	CFM	DIRECTION	LOCATION
A	78,034	NORTH	C.T.H. SINTAKE FAN (N)
B	104,341	EAST	C.T.H. SINTAKE FAN (E)
D	215,098	WEST	SMITH INTAKE FAN
F	9,021	SOUTH	SOUTHWEST ADIT EXHAUST
N	79,619	WEST	TUNNEL NO. 14 WEST EXHAUST
O	68,219	WEST	TUNNEL NO. 16 WEST EXHAUST
P	88,695	WEST	TUNNEL NO. 15 WEST EXHAUST
Q	3,239	NORTH	NORTH GATE AT SECONDARY PORTAL
R	2,586	NORTH	MAIN GATE AT SECONDARY PORTAL
S	156,184	SOUTH	MAIN PORTAL



G-5 SHEET NO.	PROJECT NO. 19-0633	CAD FILE 19-0633.dwg	SURVEYED BY TMH	DRAWN BY TMH	APPROVED BY	NO.	DATE	REVISIONS	BY
	DATE 3/29/2019	CRD FILE 19-0633.crd	SURVEY DATE 3/28/2019	CHECKED BY TMH	SCALE 1"=400'	1	4/15/2019	BUFFERS	TMH

WISCONSIN INDUSTRIAL SAND COMPANY, LLC
 A DIVISION OF FAIRMOUNTSANTROL
 MAIDEN ROCK, WISCONSIN
 VENTILATION DETAIL MAP

Healy Land Surveying
 P.O. Box 221
 Niagara, WI 54151
 Phone: 715-548-0566
 info@healysurveying.com