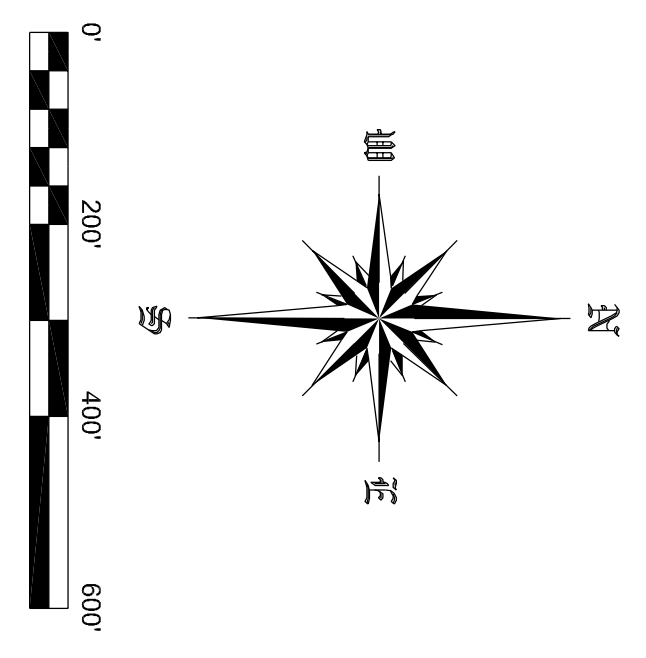


**LEGEND**

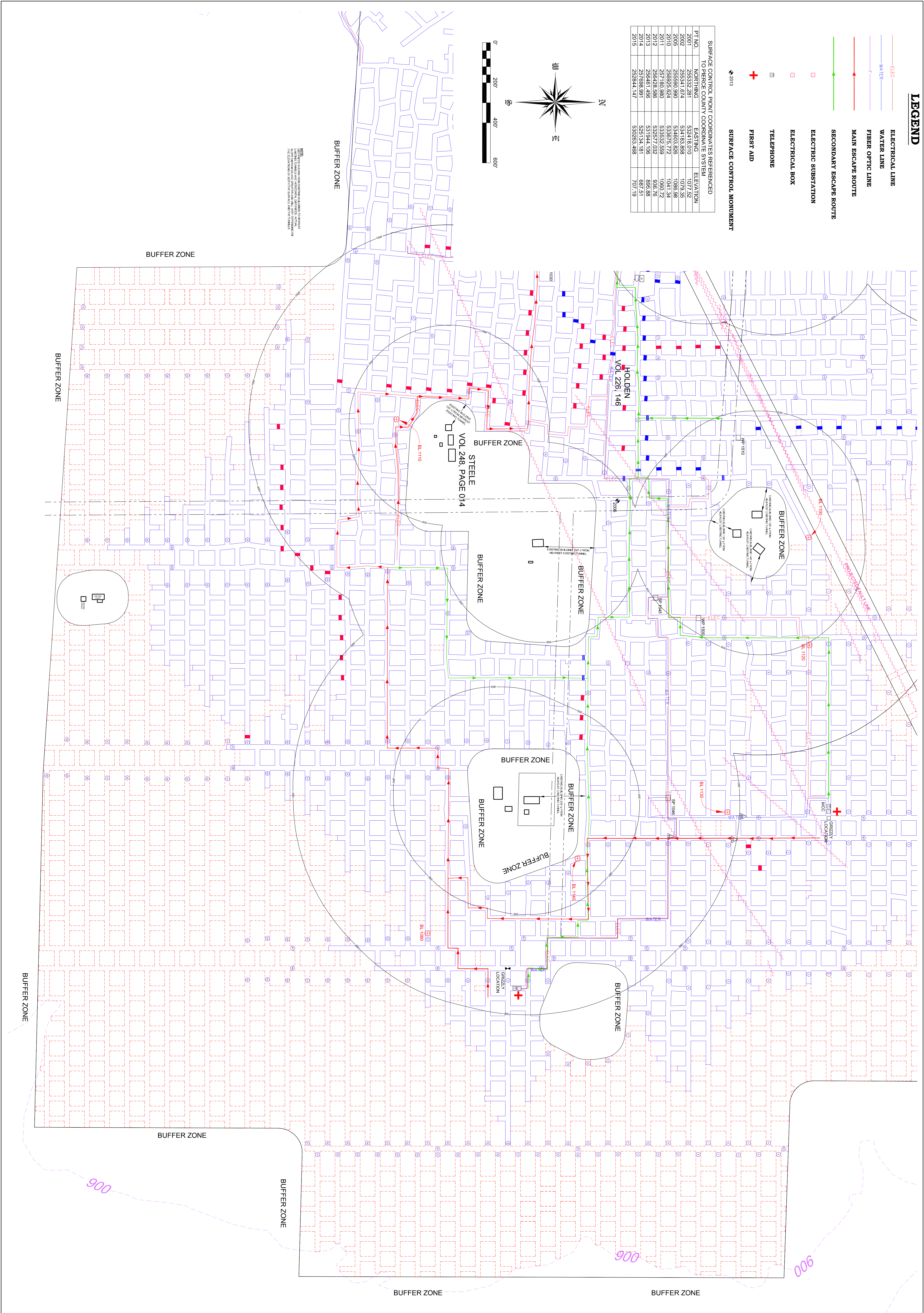
	ELECTRICAL LINE
	WATER LINE
	FIBER OPTIC LINE
	MAIN ESCAPE ROUTE
	SECONDARY ESCAPE ROUTE
	ELECTRIC SUBSTATION
	ELECTRICAL BOX
	TELEPHONE
	FIRST AID
	SURFACE CONTROL MONUMENT

SURFACE CONTROL POINT COORDINATES REFERENCED TO DIERCE COUNTY COORDINATE SYSTEM

PT. NO.	NORTHING	EASTING	ELEVATION
2001	25633.281	532418.010	1077.52
2002	25634.674	534183.858	1079.56
2005	25659.990	534603.826	1086.98
2010	256925.624	533875.772	1041.34
2011	257180.980	533532.559	1060.72
2012	256428.586	532577.032	936.76
2013	256461.466	531944.106	895.88
2014	257698.981	525134.181	687.51
2015	262844.147	530263.488	707.19



NOTE: THIS DRAWING IS FOR INFORMATION PURPOSES ONLY. IT IS NOT TO BE USED FOR CONSTRUCTION OR AS EVIDENCE IN COURT. THE SURVEYOR'S OFFICE SHALL NOT BE RESPONSIBLE FOR ANY ERRORS OR OMISSIONS.



**A-4**  
SHEET NO.

PROJECT NO.	CAD FILE	SURVEYED BY	DRAWN BY	APPROVED BY	NO.	DATE	REVISIONS	BY
19-0639	19-0639.dwg	TMH	TMH					
DATE	CRD FILE	SURVEY DATE	CHECKED BY	SCALE				
5/2/2019	19-0639.crd	4/30/2019	TMH	1"=200'				

WISCONSIN INDUSTRIAL SAND COMPANY, LLC  
A DIVISION OF COVIA HOLDINGS CORP.  
MAIDEN ROCK, WISCONSIN  
OWNERSHIP MAP

Healy Land Surveying  
P.O. Box 221  
Niagara, WI 54151  
Phone: 715-548-0566  
info@healysurveying.com