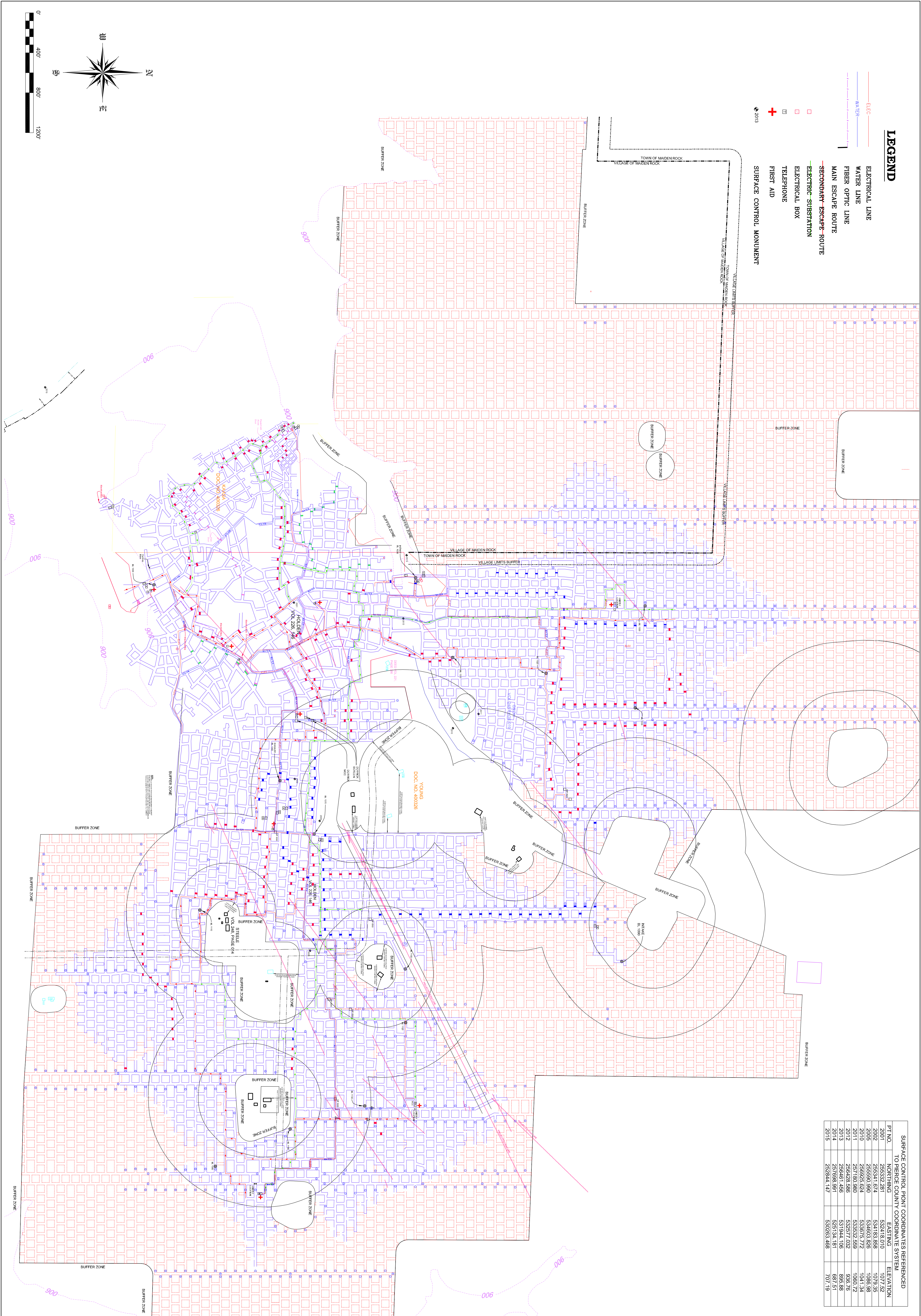
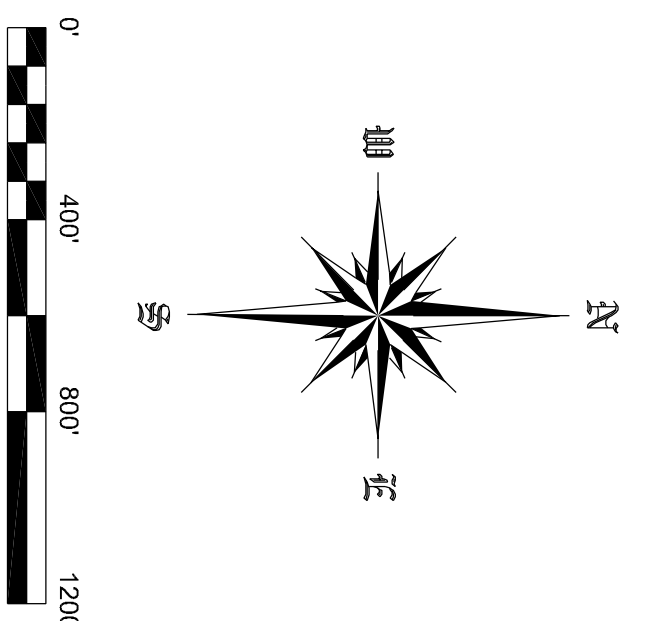


**LEGEND**

- ELEC — ELECTRICAL LINE
- WATER — WATER LINE
- FIBER OPTIC LINE — FIBER OPTIC LINE
- MAIN ESCAPE ROUTE — MAIN ESCAPE ROUTE
- SECONDARY-ESCAPE ROUTE — SECONDARY-ESCAPE ROUTE
- ELECTRIC-SUBSTATION — ELECTRIC-SUBSTATION
- ELECTRICAL BOX
- TELEPHONE
- FIRST AID
- ◆ 2013 SURFACE CONTROL MONUMENT



SURFACE CONTROL POINT COORDINATES REFERENCED TO PIERCE COUNTY COORDINATE SYSTEM

PT. NO.	NORTHING	EASTING	ELEVATION
2001	255332.281	532418.010	1077.52
2002	255341.674	534183.858	1079.35
2005	255590.990	534603.826	1086.98
2010	256925.624	533675.772	1041.34
2011	257180.980	533532.559	1060.72
2012	256428.585	532577.032	935.76
2013	256467.455	531944.105	895.88
2014	257098.991	525134.151	697.51
2015	252544.147	530283.468	707.19

B-1  
SHEET NO.

PROJECT NO. 19-0639	CAD FILE 19-0639.dwg	SURVEYED BY TMH	DRAWN BY TMH	APPROVED BY	NO.	DATE	REVISIONS	BY
DATE 5/2/2019	CRD FILE 19-0639.crd	SURVEY DATE 4/30/2019	CHECKED BY TMH	SCALE 1"=400'				

WISCONSIN INDUSTRIAL SAND COMPANY, LLC  
A DIVISION OF COVIA HOLDINGS CORP.  
MAIDEN ROCK, WISCONSIN  
TUNNEL LOCATION OVERVIEW MAP

Healy Land Surveying  
P.O. Box 221  
Niagara, WI 54151  
Phone: 715-548-0566  
Info@healysurveying.com